

MY TOP TRADING PATTERNS

Presentation by *Christopher Terry*

Trading in commodities and/or securities may not be suitable for all individuals. Consult your broker or other professional to determine your suitability. The discussions provided by Christopher Terry are for educational purposes only and should not be taken as a recommendation to buy or sell the referenced security. Past performance is not indicative of future results.

© 2008 All information presented is property of Christopher Terry and the LBRgroup.com. Charts provided by Tradestation.com

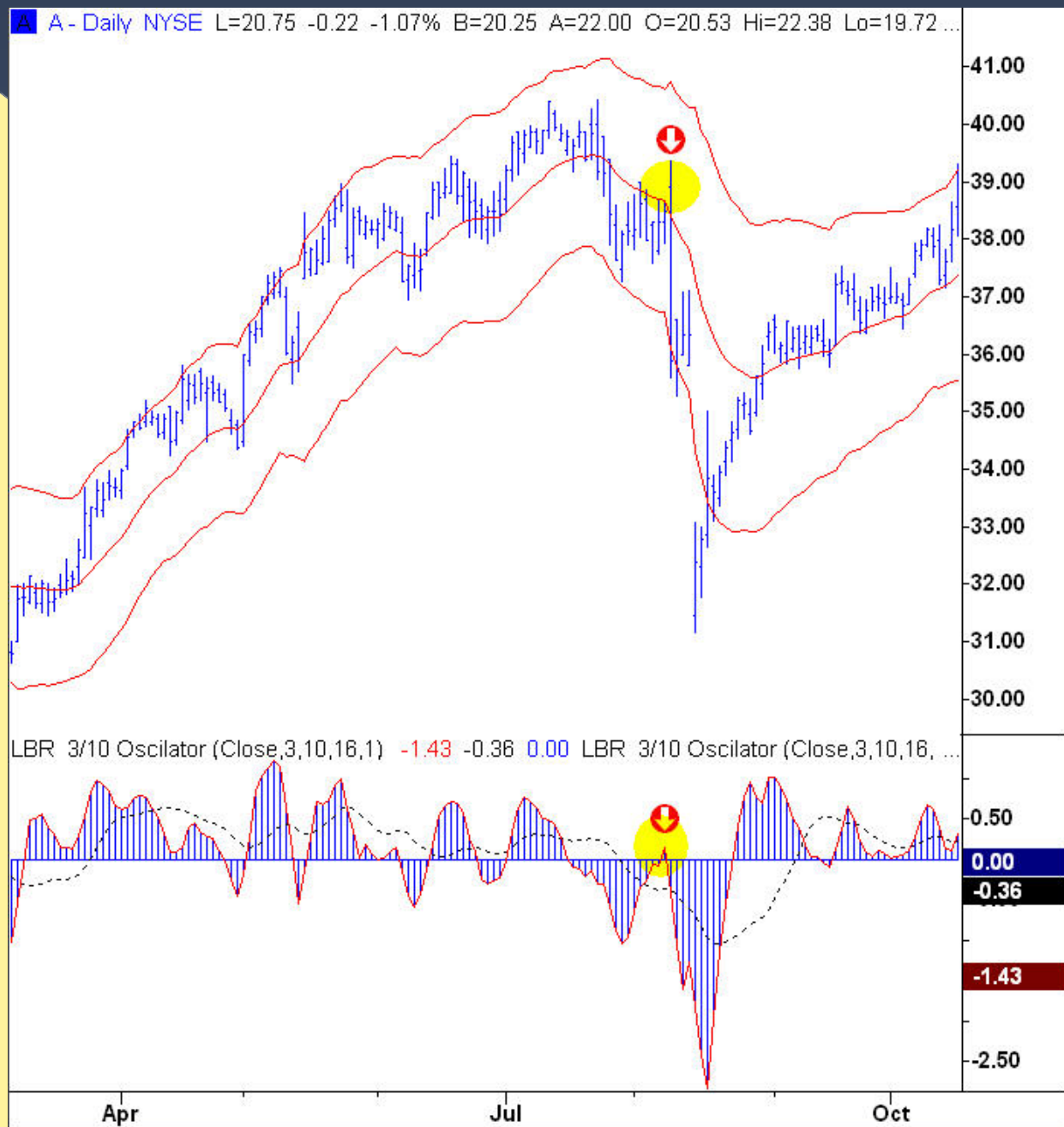
My Top Trading Patterns

- First Cross Buy & Sell
- Buy & Sell Divergences
- Power Buy & Sell

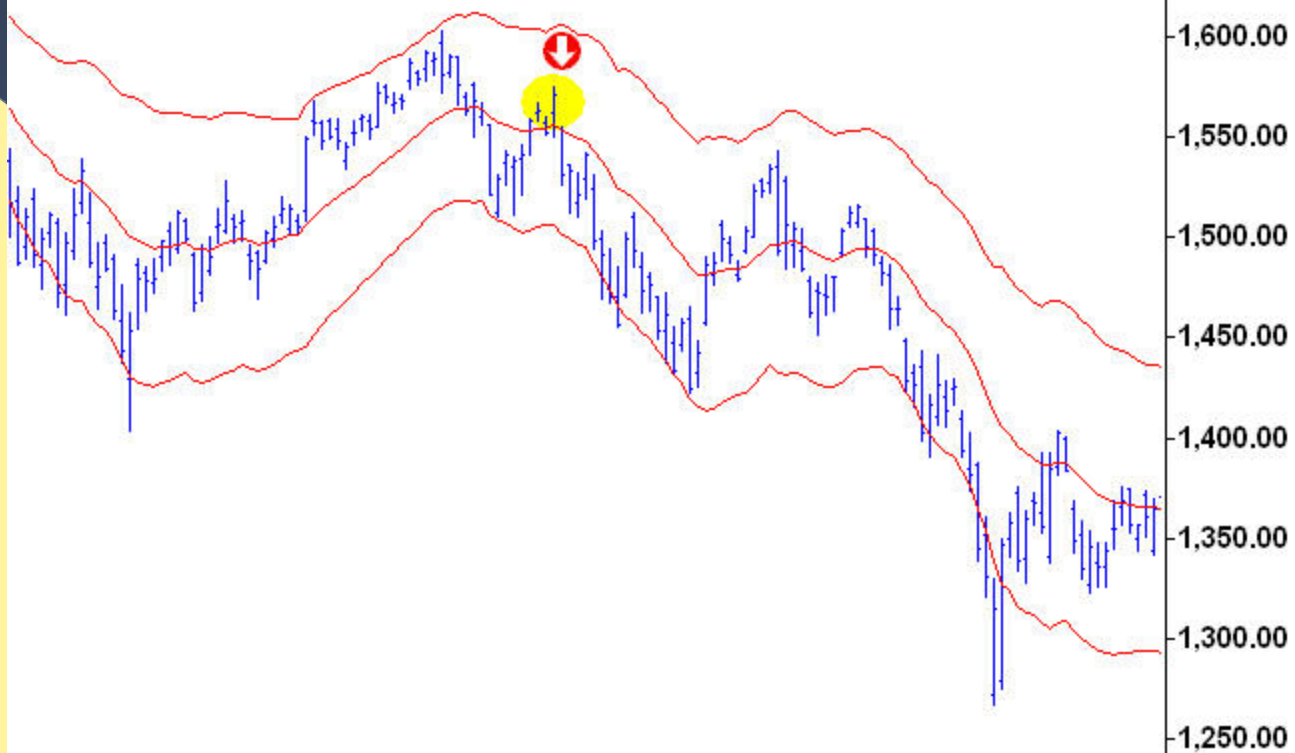
The First Cross Trade

The First Cross Buy –

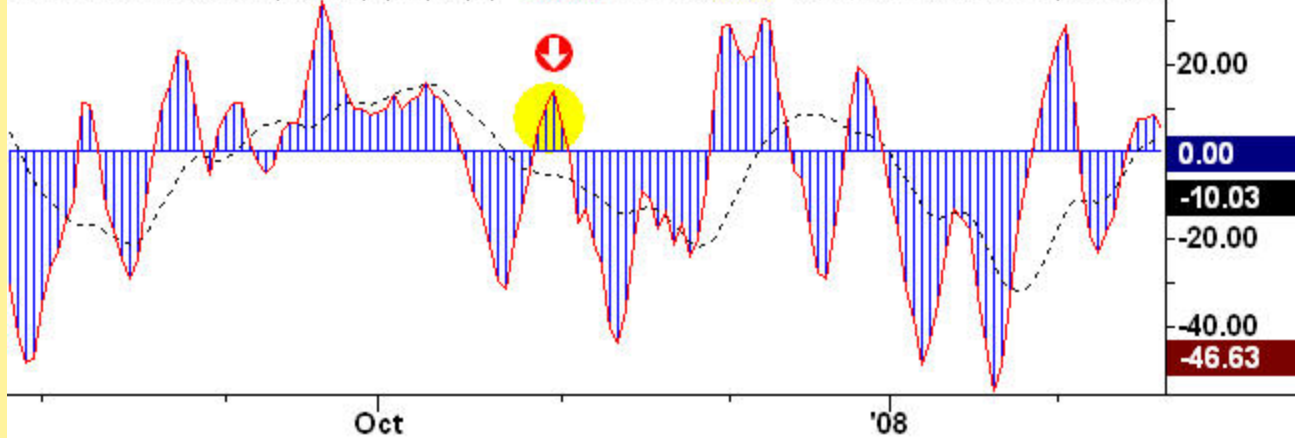
- This is a pullback that most often the first higher low is formed after a base or consolidation period. The “slow” line, or 16 MA of the 3/10 oscillator crosses ABOVE the zero line for the first time. The “fast” line or 3/10 oscillator pulls back below zero as the price forms a higher low. First Cross refers to the fast that it is the first pullback in price after the “slow” line has crossed from below zero to above zero.
- Reverse is true for a First Cross Sell.



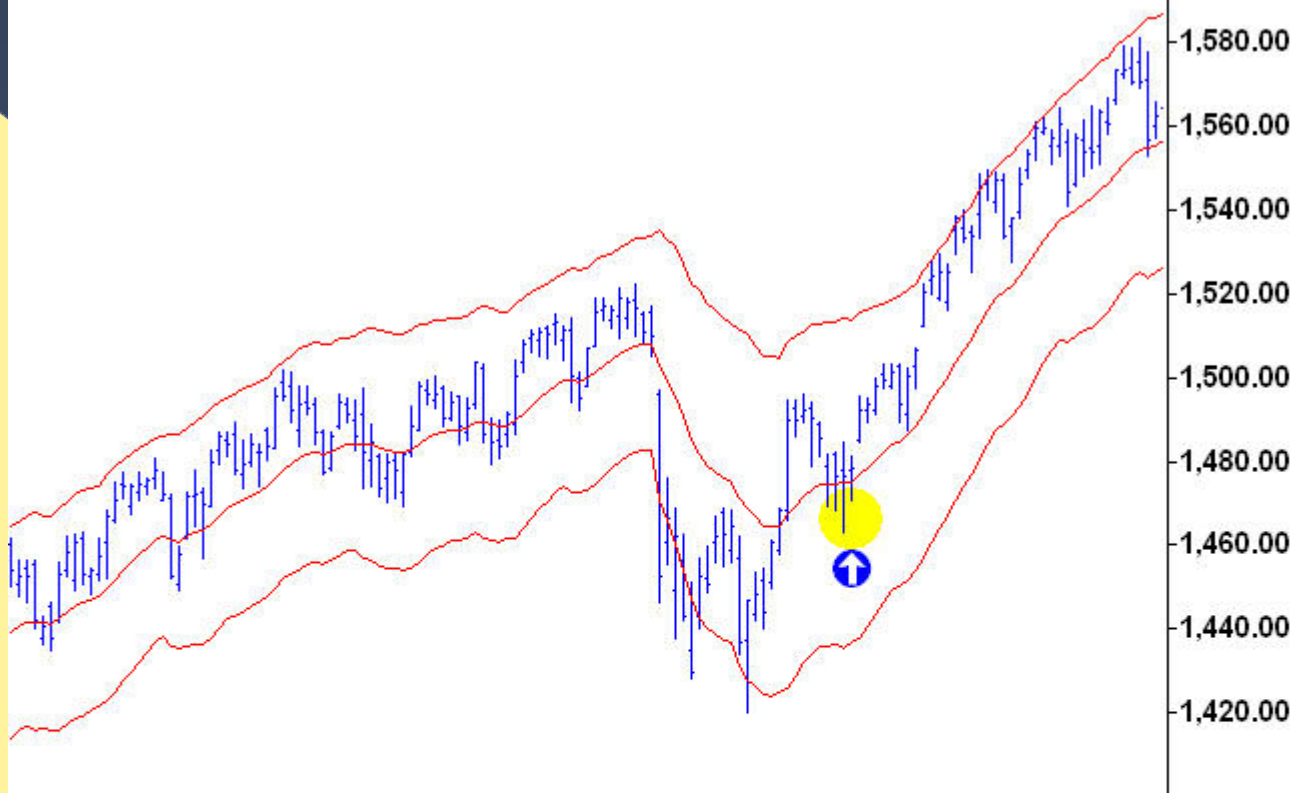
Ⓐ @ES.D - Daily CME L=860.50 -47.25 -5.21% B=860.25 A=861.25 O=890.25 F...



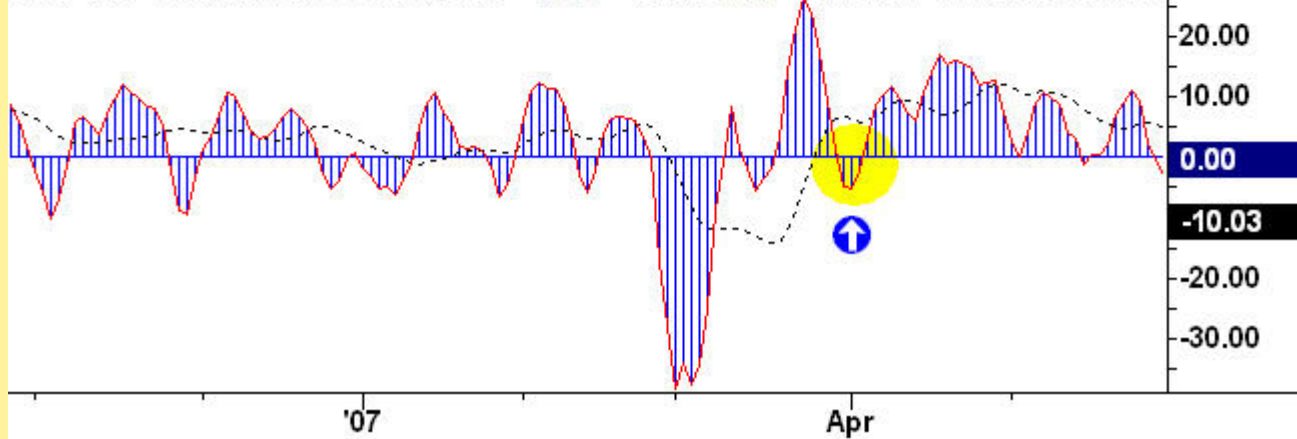
LBR 3/10 Oscillator (Close,3,10,16,1) -46.63 -10.03 0.00 LBR 3/10 Oscillator (Close ...



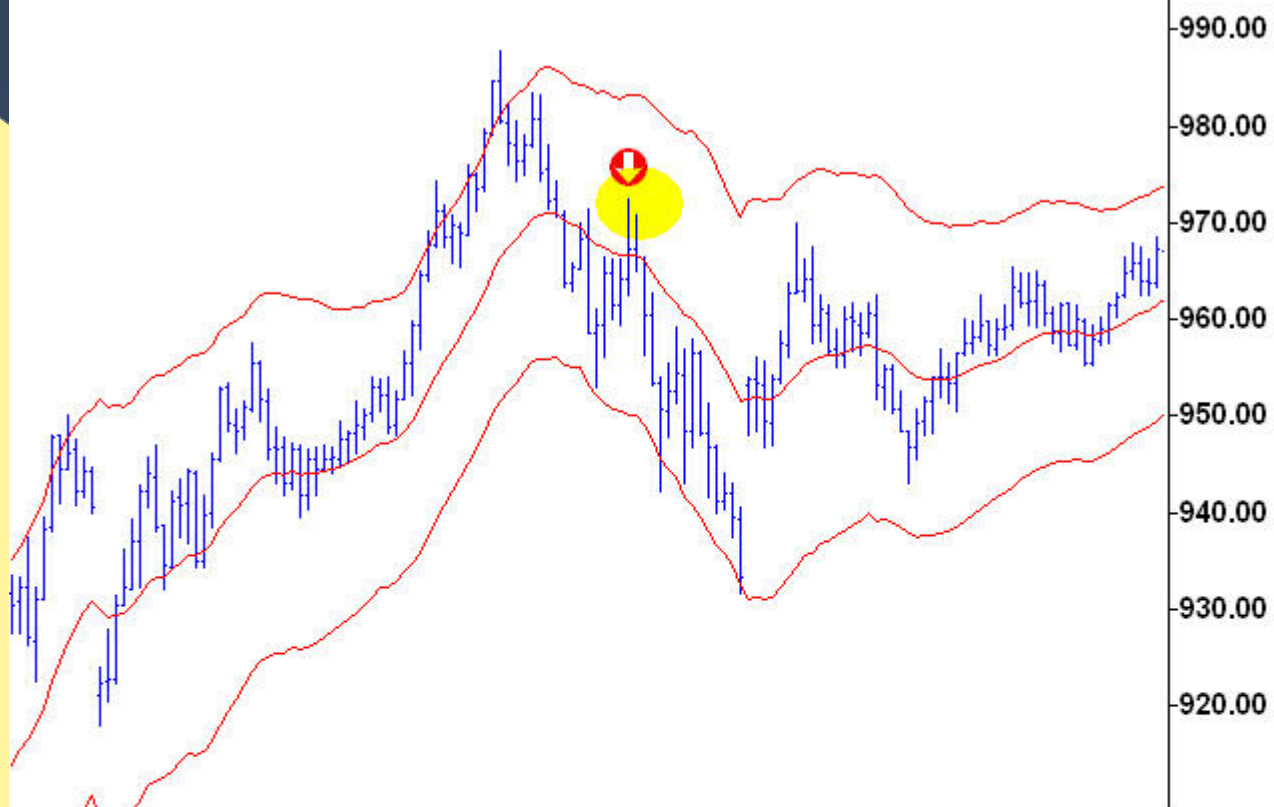
@ES.D - Daily CME L=860.50 -47.25 -5.21% B=860.25 A=861.25 O=890.25 F...



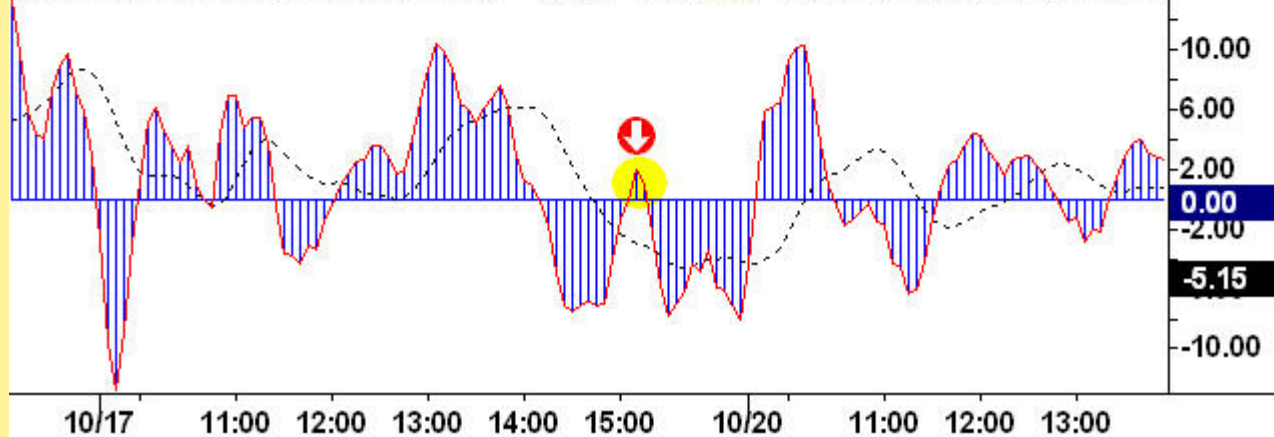
LBR 3/10 Oscillator (Close,3,10,16,1) -46.63 -10.03 0.00 LBR 3/10 Oscillator (Close ...

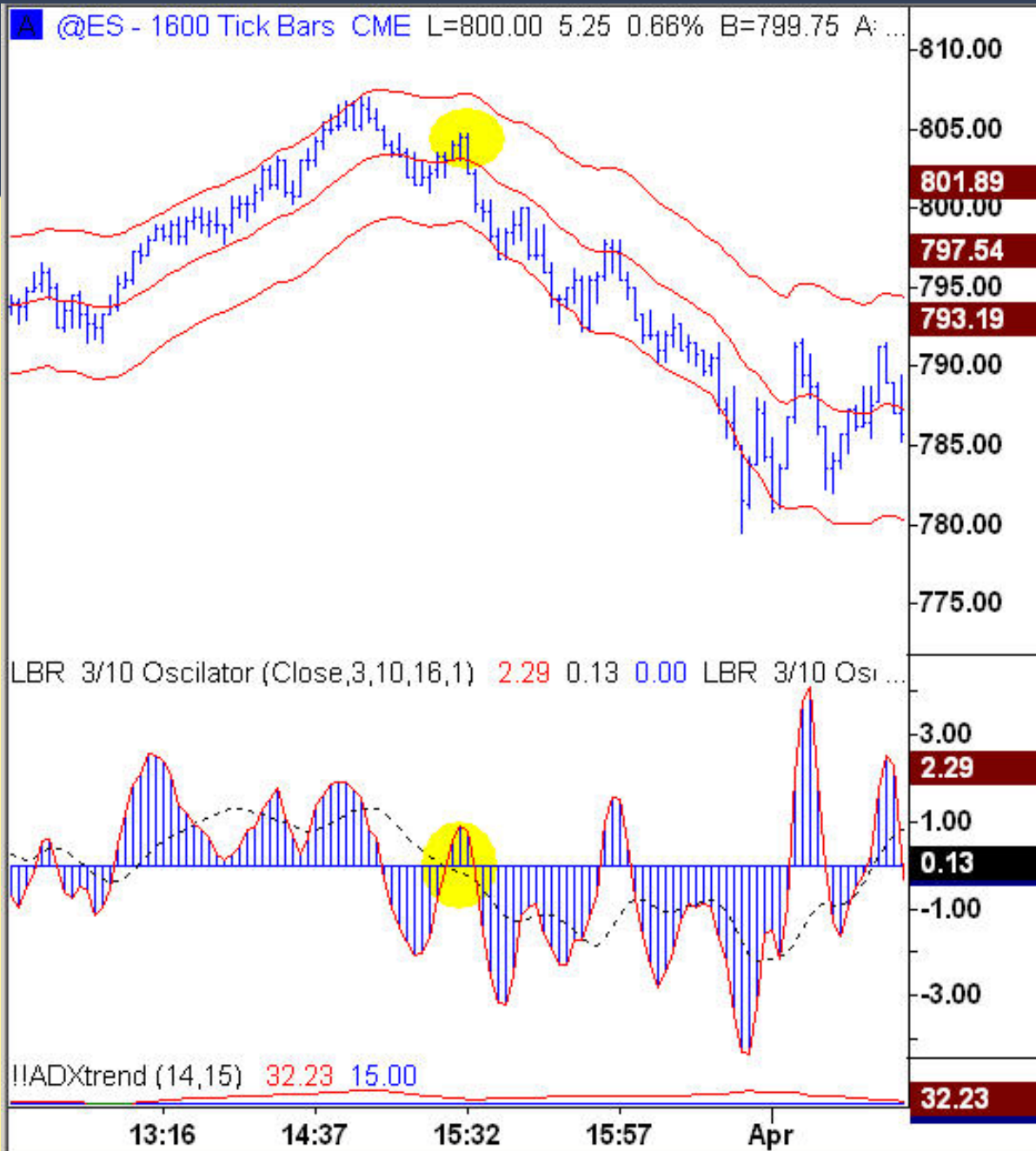


A @ES.D - 5 min CME L=860.50 -47.25 -5.21% B=860.25 A=861.25 O=890.25 I...

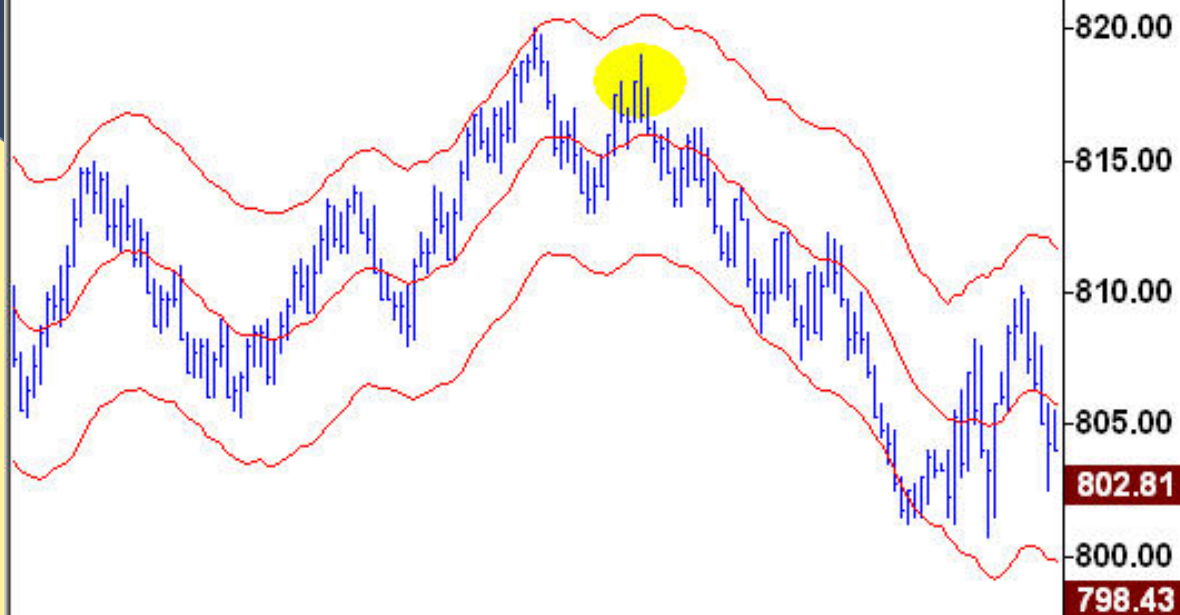


LBR 3/10 Oscillator (Close,3,10,16,1) -17.45 -5.15 0.00 LBR 3/10 Oscillator (Close, ...

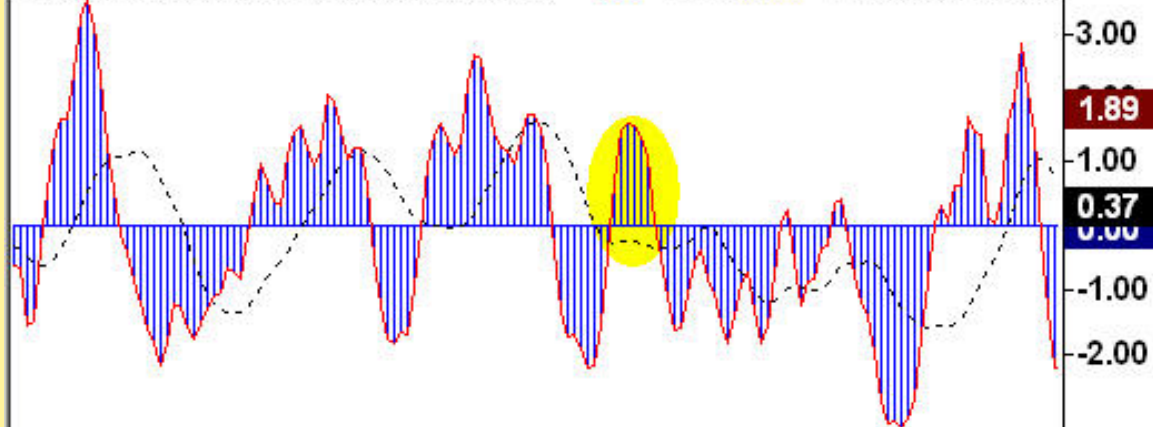




A @ES - 1600 Tick Bars CME L=801.25 6.50 0.82% B=801.25 A: ...



LBR 3/10 Oscillator (Close,3,10,16,1) 1.83 0.36 0.00 LBR 3/10 Osi ...



!!ADXtrend (14,15) 32.50 15.00



10:30

11:45

13:27

14:52

15:53

3/25

Divergence

Sell Divergence Trade –

- We look for buy and sell divergences using the 3/10 oscillator. The best ones occur when the move is extended along the Keltner Channels (2.50 ATR around 20 ema).
- We also like to see the oscillator stay BELOW the zero line as the divergence is forming.
- A divergence does not necessarily imply a trend reversal. Thus, we look for a retracement back to the 20-period EMA as the minimum objective.

Divergence

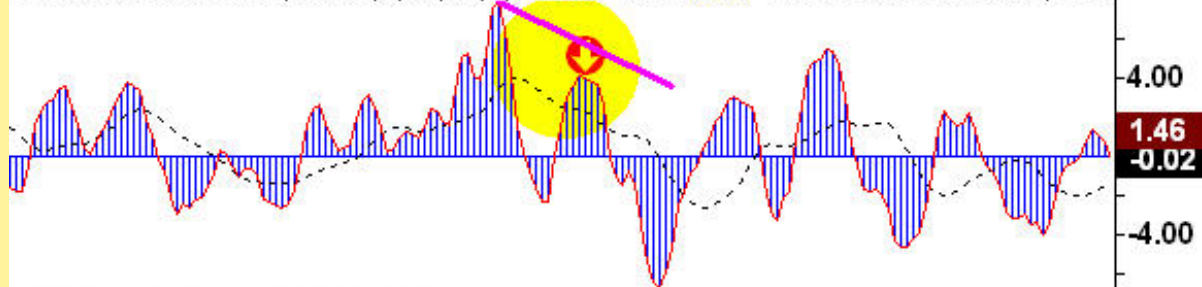
Sell Divergence Trade –

- Price makes higher high, 3/10 oscillator makes lower high, there is also a type of divergence when price makes Three Pushes up, and 3/10 oscillator makes lower highs to the price highs.
- Risk point for Sell divergence is just above the swing high once price turns.
- Pattern works best when the “slow” line also forming a divergence.
- Reverse is true for a Buy Divergence.

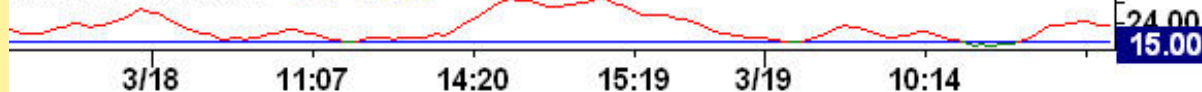
@ES - 3600 Tick Bars CME L=815.50 -11.75 -1.42% B=814.25 A=816.50



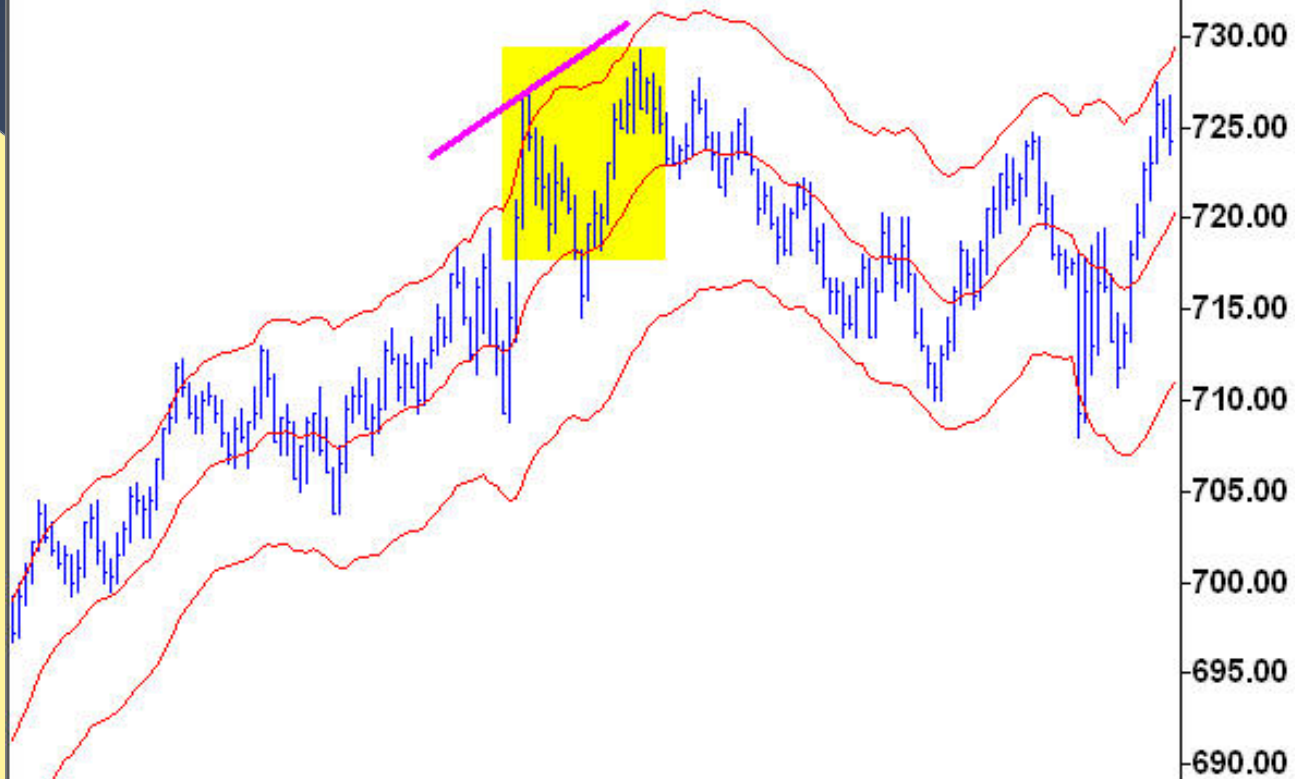
LBR 3/10 Oscillator (Close,3,10,16,1) 1.46 -0.02 0.00 LBR 3/10 Oscillator (CI ...



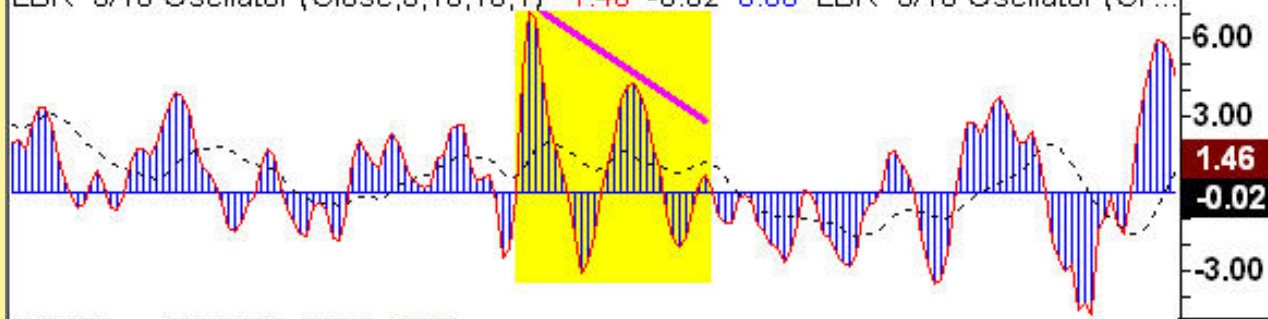
!!ADXtrend (14,15) 9.25 15.00



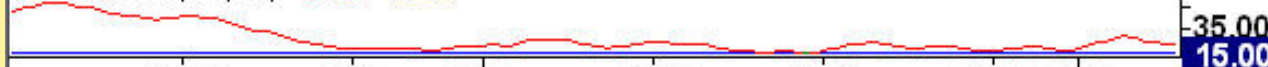
▲ @ES - 3600 Tick Bars CME L=815.50 -11.75 -1.42% B=814.25 A=816.50



LBR 3/10 Oscillator (Close,3,10,16,1) 1.46 -0.02 0.00 LBR 3/10 Oscillator (Cl ...



IIADXtrend (14,15) 9.25 15.00



12:08

15:05

3/11

10:03

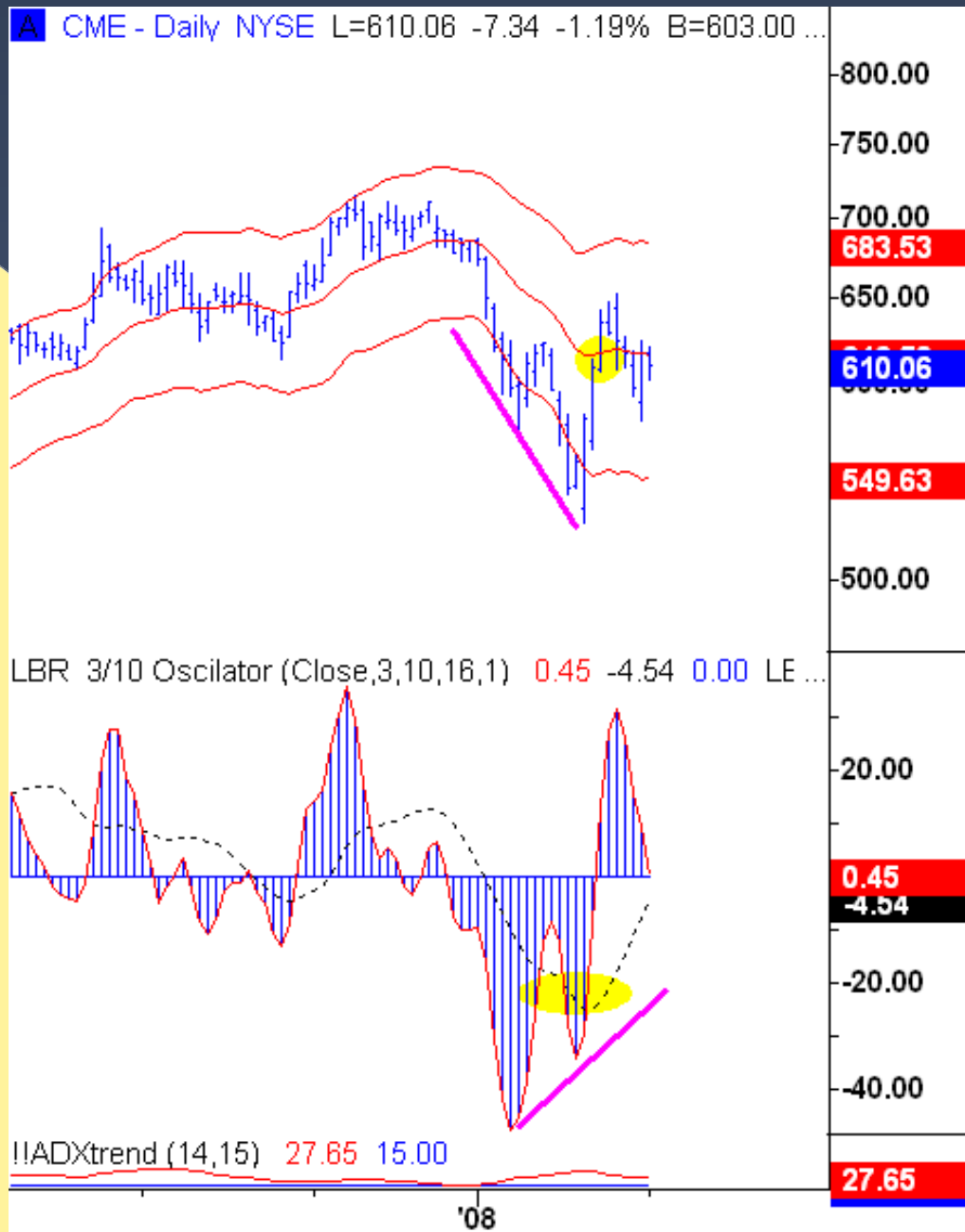
12:39

15:15

3/12

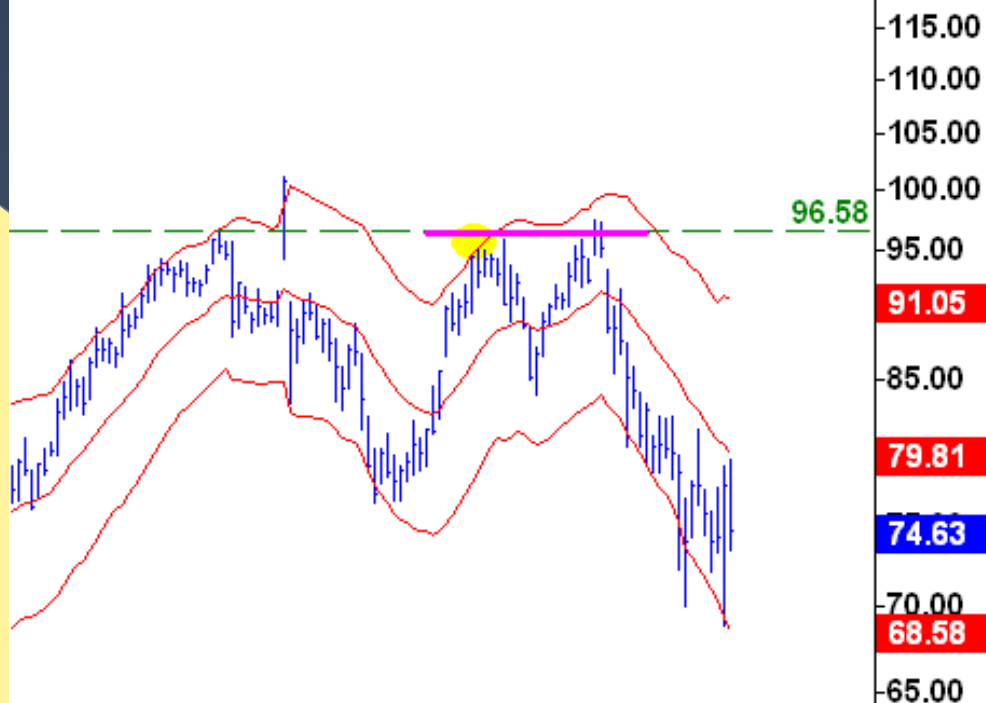
A SKF - 120 min ARCX L=95.00 4.64 5.14% B=94.95 A=95.32 O=95.16 F...



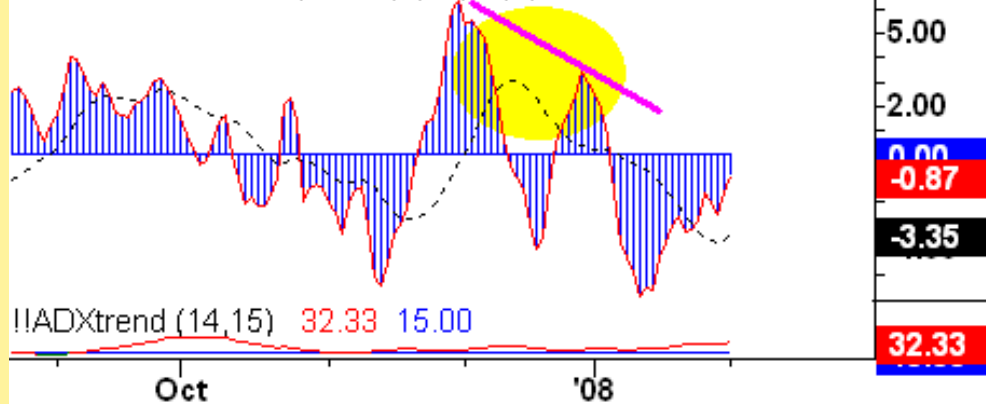




AMZN - Daily NASDAQ L=74.97 -2.73 -3.51% B=0.00(...



LBR 3/10 Oscillator (Close,3,10,16,1) -0.87 -3.35 0.00 L ...







Power Buy/Sell

Power Buy –

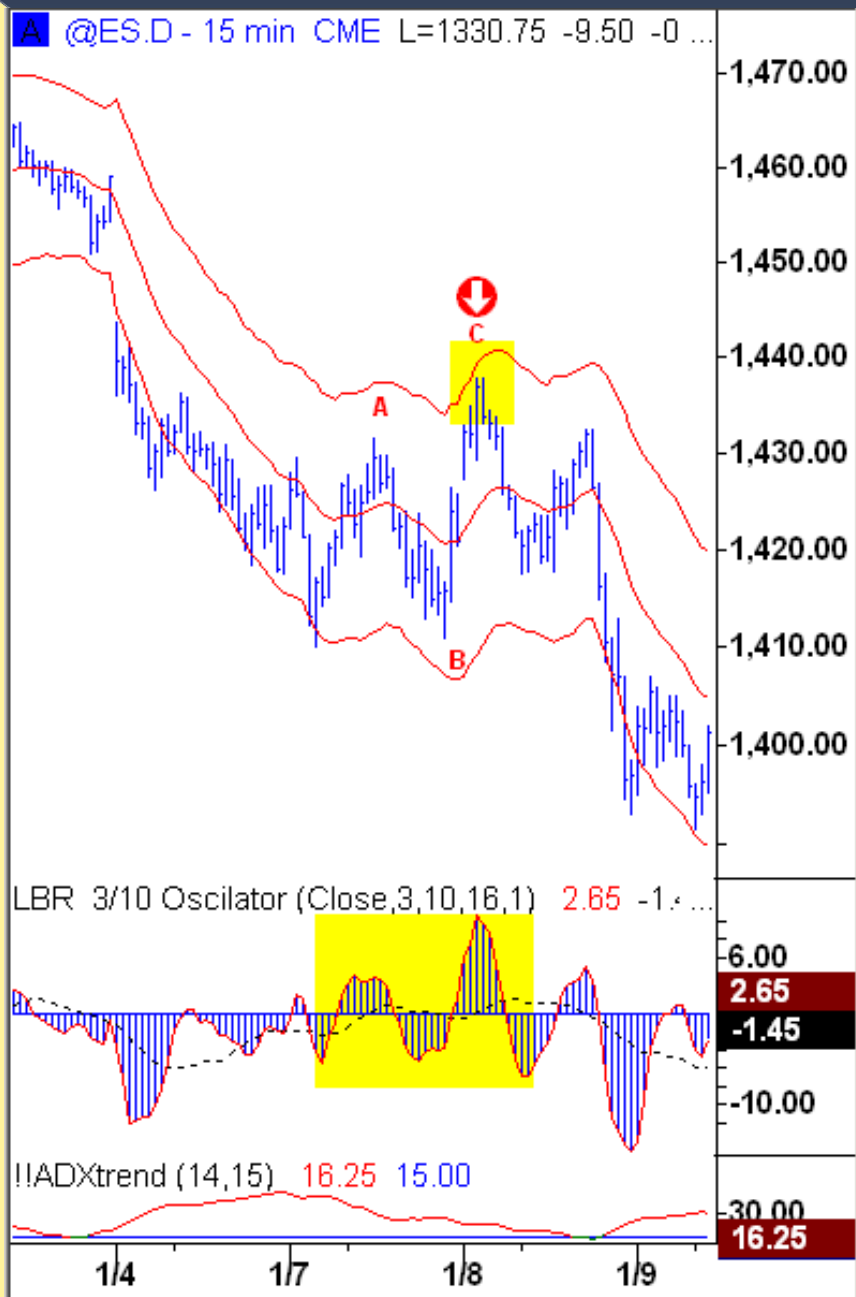
- ⦿ This setup is formed by a combination of two time frames.
- ⦿ A two part corrective wave down on the shorter time frame occurs within the context of a bull flag on the higher time frame.
- ⦿ Power Buy is triggered when price trades below the prior swing low on the short time frame.

Power Buy/Sell

Power Buy –

- ⦿ This creates fuel for the fire when the market then reverses to the upside as the trend on the higher time frame kicks back in.
- ⦿ The higher time frame 20 exponential moving average acts as support.
- ⦿ Reverse is true for Power Sale

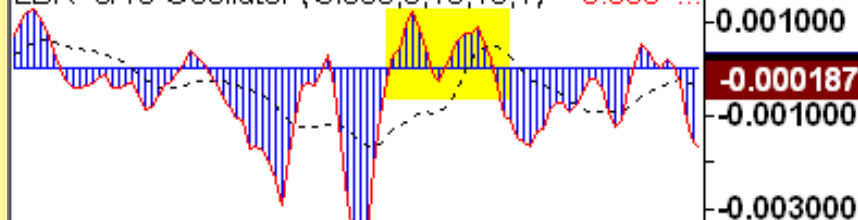




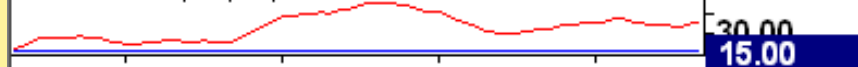
A @EC - 5 min CME L=1.4490 0.0020 0.1...



LBR 3/10 Oscillator (Close,3,10,16,1) -0.000...



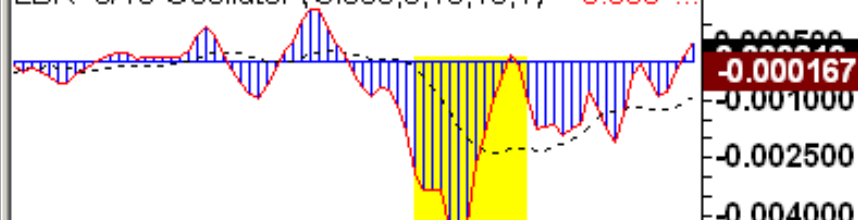
!!ADXtrend (14,15) 11.82 15.00



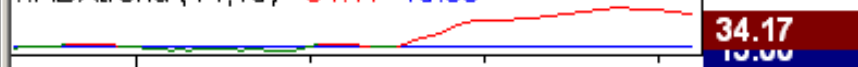
A @EC - 15 min CME L=1.4490 0.0020 0.1...

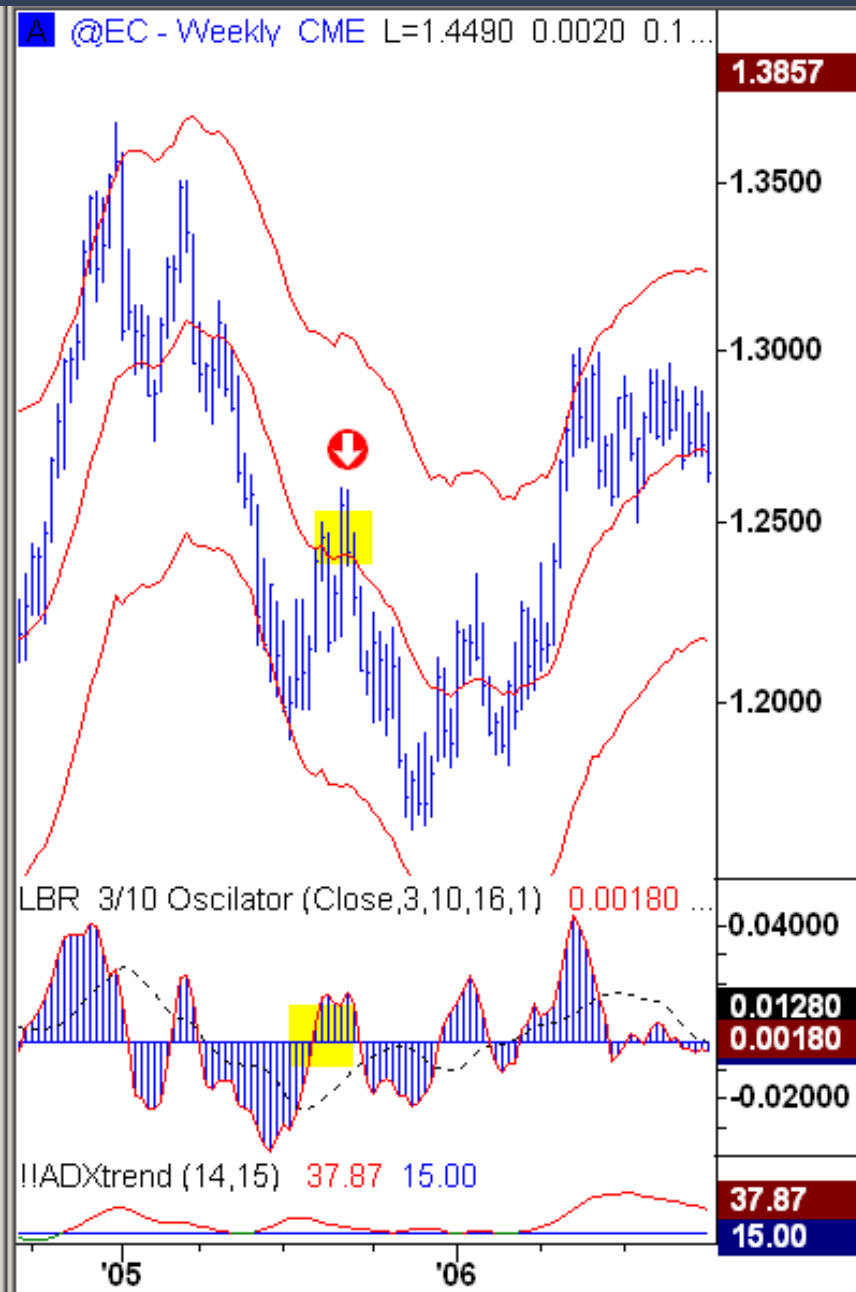
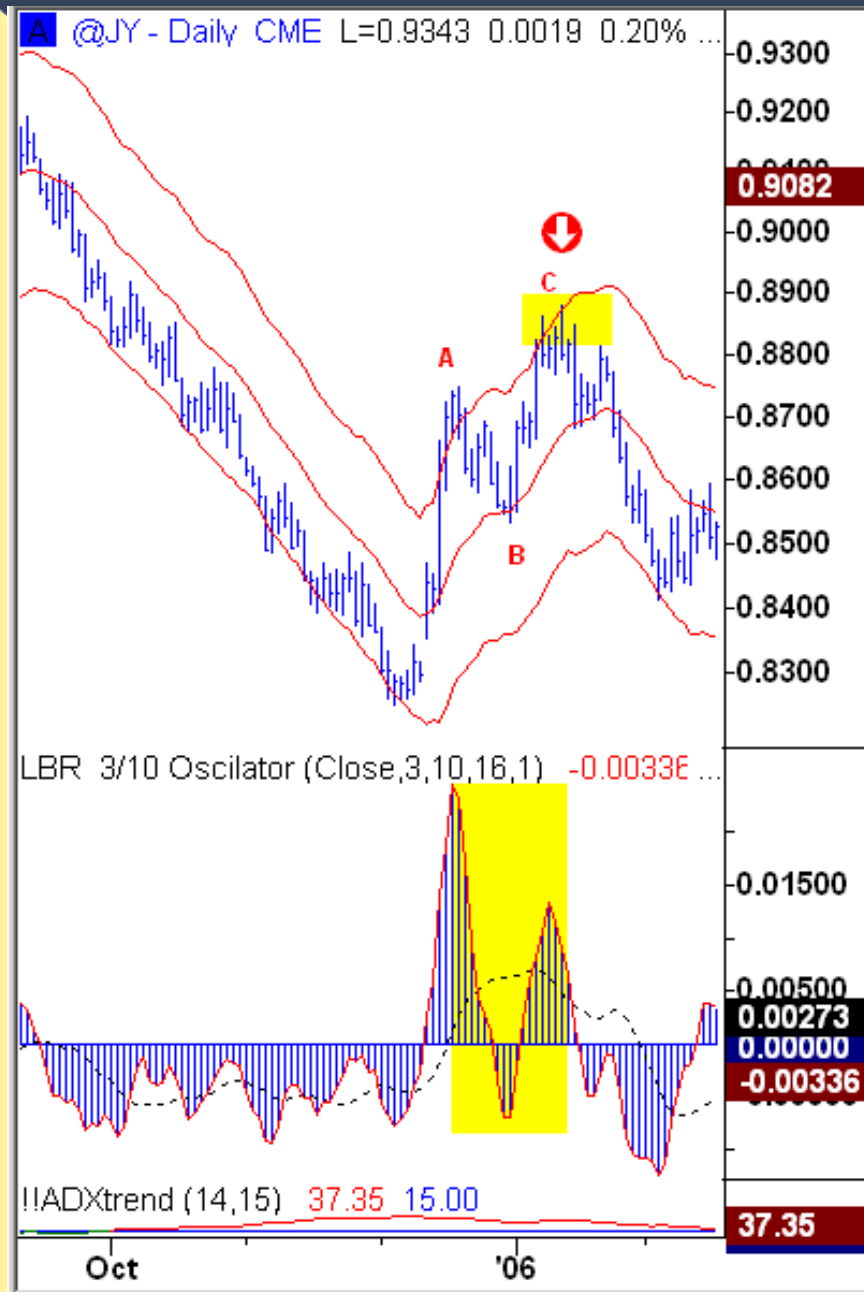


LBR 3/10 Oscillator (Close,3,10,16,1) -0.000...



!!ADXtrend (14,15) 34.17 15.00







THANK YOU!

Go to www.LBRgroup.com for more information.

Email: Chris@LBRgroup.com

EMAIL ME FOR A FREE TRIAL TO OUR WEBSITE