

CQG Trader

High-performance market data and electronic trading application.

CQG Trader is the perfect execution platform for traders who don't require technical analysis tools.

Take advantage of this powerful application to view market activity, place orders, and track orders and positions.

Many of CQG's FCM partners offer CQG Trader as an order entry and account management front end.

Find Out More About...

- Professional Tools
- News in CQG Trader
- Additional Features
- Multilingual CQG Trader

Order Routing Efficiency

CQG Trader offers real-time quotes, trading, order management, white labeling, and multilingual functionality.

Professional Tools

Customizable Three-Pane Layout

- DOMTrader®: Provides market transparency and intermarket and multi-market trading functionality
- Order Ticket: Includes buy/sell buttons and enhanced visibility of the net change and volume
- Quote Board: Displays the open, high, low, and close values

Orders and Reports

The Orders and Reports summary displays:

- Account summary
 - Cancelled orders
 - Exceptions
 - Filled orders
 - Open positions
- Parked orders
 - Purchases
 - Sales
 - Working orders

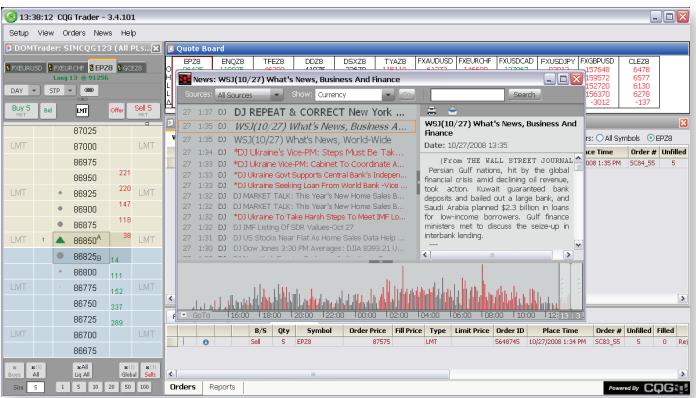


News in CQG Trader

Real-Time Market Releases

With news feeds in CQG Trader, customers can track market-moving events and monitor their trading decisions.

- Available services:
 - Dow Jones Newswires
 - The Hightower Report
 - Interfax News
 - Market News International
 - Need to Know News
- The cutting-edge feature displays headlines with varying font sizes, highlighting the most current news releases.
- Keyword search allows traders to browse news releases based on their trading needs.
- Traders can adjust CQG News preferences to display the story pane, timeline, and recent headlines in scroll mode; to adjust color schemes; and to highlight keyword searches.



Additional Features

Consolidated Electronic Trading

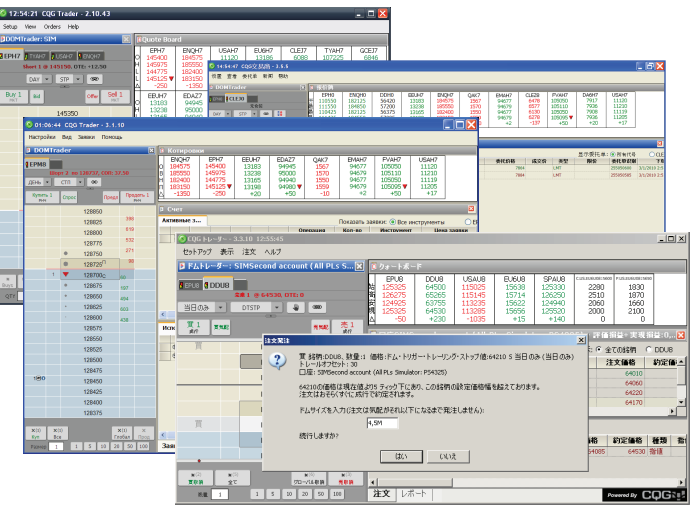
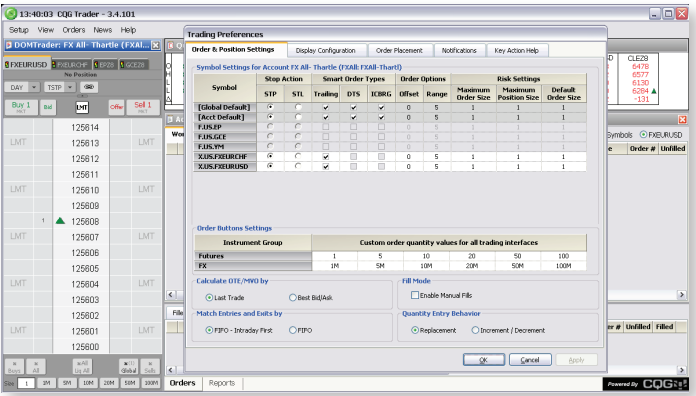
- Customers interested in FX can trade non-even amounts of currency and easily manage orders and positions using large-quantity abbreviations.
- CQG supports these order types and durations:
 - Day
 - Fill and kill
 - Fill or kill
 - Good-till-cancelled
 - Manual fills
 - Order-cancels-order
 - Stop
 - Stop limit
 - Trailing stop
 - Trailing stop limit
- DOM ladder compression is available for thinly traded electronic markets.
- Fills executed outside the CQG Hosted Exchange Gateways, such as pit trades, may be entered in the Orders and Positions window.
- Net open trade equity for related futures and options positions can be displayed.

Multilingual CQG Trader

A World of Trading Possibilities

CQG has your key to opening the world for business. Trading is a universal passion. Non-English speakers can now take advantage of using a trading application in their languages.

- Available Languages:
 - Chinese
 - Russian
 - Japanese



Connections to Exchanges and Cash OTC Markets | June 2010

(Blue indicates order routing capability.)

North & South American Exchanges

- Brazilian Mercantile & Futures Exchange (BM&FBOVESPA)
- CBOE Futures Exchange (CFE)
- Chicago Board of Trade (CBOT)
- Chicago Board Options Exchange (CBOE)
- Chicago Climate Futures Exchange (CCFE)
- Chicago Mercantile Exchange (CME)
- ELX Futures, L.P. (ELX)
- Globex
- ICE Futures Canada®
- ICE Futures U.S.®
- Kansas City Board of Trade (KCBT)
- Mexican Derivatives Exchange (MexDer)
- Minneapolis Grain Exchange (MGEX)
- Montreal Climate Exchange (MCeX)
- Montreal Exchange (MX)
- NASDAQ Stock Market (NASDAQ)
- New York Mercantile Exchange (NYMEX)
- New York Stock Exchange (NYSE)
- NYMEX/COMEX
- NYSE Amex
- NYSE Euronext Liffe
- NYSE Euronext MATIF
- NYSE Euronext Metals
- OneChicago
- Toronto Stock Exchange (TSX)

European Exchanges

- Baltic Full Service (Baltic Exchange)
- Borsa Italiana
- Deutsche Börse Indices and ETF
- Deutsche Börse (German Equities)
- Eurex Ultra
- Euronext Indices

European Exchanges (Continued)

- European Climate Exchange (ECX)
- European Energy Exchange (EEX)
- ICE Futures Europe®
- Liffe Commodities Derivatives
- Liffe Equity and Index Derivatives
- Liffe Interest Rate Derivatives
- London Metal Exchange (LME)
- London Stock Exchange (LSE Equities)
- Moscow Interbank Currency Exchange (MICEX) Currencies
- MICEX Equities
- MICEX Futures
- NASDAQ OMX
- Nord Pool
- Russian Trading System (RTS) Stock Exchange
- Spanish Equities Futures & Index (MEFF-RV, Renta Variable)
- STOXX Cash Indices (STOXX)
- Swiss Stocks & Indices (SWX)

Asian & Pacific Exchanges

- Australian Securities Exchange (ASX)
- Bombay Stock Exchange (BSE)
- Bursa Malaysia Derivatives Exchange (Bursa Malaysia)
- Dubai Mercantile Exchange (DME)
- Hang Seng Indices (HSI)
- Hong Kong Exchanges and Clearing Limited (HKEX)
- Korea Exchange (KRX)
- Multi Commodity Exchange of India (MCX)
- National Stock Exchange of India (NSE)
- Osaka Securities Exchange (OSE)
- Singapore Futures (SGX) Derivatives

Asian & Pacific Exchanges (Continued)

- Singapore Futures (SGX) Securities
- Taiwan Stock Exchange (TWSE)
- Tokyo Commodities Exchange (TOCOM)
- Tokyo Financial Exchange (TFX)
- Tokyo Grain Exchange (TGE)
- Tokyo Stock Exchange (TSE)

Cash OTC Markets

- BGC US Treasuries
- BGCantor CGB Service (Canadian Government Bonds Service)
- BGCantor EGB Service (European Government Bonds Service)
- BGCantor UST Service (US Treasury Service)
- BrokerTec (Treasury Pricing Service)
- CQG Comprehensive Index™ (FX and Money Market Data)
- CQG FX Index™ (Indicative FX Data)
- EBS (EBS Dealing Resources)
- FXall
- GovPX (GovPX Treasury Pricing Service)
- ICAP Asian Capital Market Service
- ICAP Eurobonds
- ICAP Swap Data
- PLATTS (Energy Prices)
- Rogers International Commodity Index® (RIC®)
- S&P Indices (Standard & Poor's)
- TFS-ICAP FX Options
- Tullett KeyRates
- Tullett LatAmMarker™
- Tullett Metals
- Tullett Sovereign Debt
- Tullett SwapMarker®

CQG Trader System Requirements

CQG data is delivered via the Internet.

- **Processor:** Intel® Pentium® 4 3.0 Ghz. Dual-Core, Intel Core™ 2 Duo (2.33 Ghz or better) is recommended.
- **Operating System:** Windows® 7, Windows Vista, or Windows XP. Windows 2000 is not supported.
- **Memory:** 1GB RAM. 2GB or better for Vista or Windows 7.
- **Hard Drive:** 7200RPM with at least 1GB of free hard disk space. 4GB is recommended.
- **Network Adapter:** Network Interface Card (NIC) configured to use TCP/IP. (Required for DSL, Cable, or T1).
- **Internet Access:** CQG Trader requires Internet service via a high-speed connection, such as DSL, cable, or fixed wireless/wireless local loop (WLL). Wireless Internet connections are not recommended, especially broadband over a WiFi card. Dial-up is not supported. All network communications between CQG customers and servers are initiated from the client side. The destination port number at the server side is 2823, CQG's registered port number. CQG also uses a secure connection, port number 443, for authorization purposes.
- **Video Card:** Dual-port graphics adapter with 128Mb of memory, 64Mb per port. 256Mb recommended with 128Mb per port supporting Direct X® version 9.x or better.
- **Power Saving Settings:** Hibernate and stand by modes cannot be used on a system running CQG Trader. Hard drive power-saving features should also be disabled.
- **Multi-Monitor Configuration:** These specifications are appropriate for single and dual monitor setups. If you have three or four monitors, you will need a higher performance processor, video card, and network connection.
- **Optional:** Sound 16-bit SoundBlaster™ compatible sound card for enhanced audible alarms.

Contact Us

www.cqg.com | websales@cqg.com | Or call your CQG sales representative

US 1-800-525-7082 | **Japan** +81 (0) 3-3286-6633 | **UK** +44 (0) 20-7827-9500 | **Russia** +7 495-795-2410

France +33 (0) 1-74-18-07-81 | **Germany** +49 (0) 69-6677-7558-0 | **Singapore** +65 6494-4911 | **Australia** +61 (2) 9235-2009