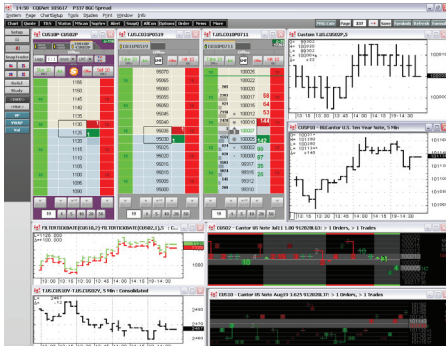


CQG Products

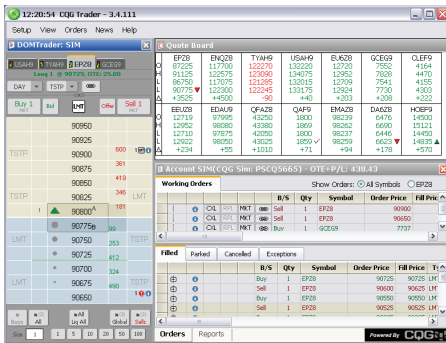
CQG offers best-of-class tools for the professional trader.

CQG Integrated Client



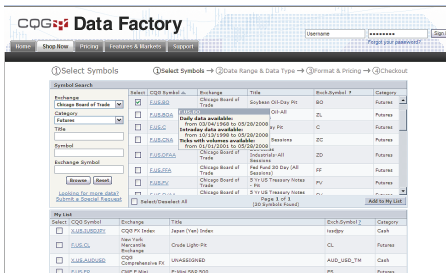
- The power of CQG's advanced analytics charts combined with fast, reliable order execution.
- Accurate and dependable market data.
- Fourteen different chart styles, including the exclusive TFlow® charts and studies.
- Eight different display styles, two of which can be linked to Microsoft Excel®.
- Time, price, and news alerts that can generate orders directly into the market.
- Portfolio and market scans.
- Backtesting, signal evaluation, optimization, and an automatic trading system.
- An elegant way to read and filter news with nine sources, including Dow Jones Newswires.
- The ability to easily execute, modify, and cancel trades.
- User-to-user messaging and CQG Live Chat with Customer Support.

CQG Trader



- The speed and reliability of CQG Integrated Client in a quote and trading platform.
- Streamlined order execution platform with a customizable three-pane layout.
- DOMTrader®: Provides market transparency and intermarket and multi-market trading functionality.
- Order Ticket: Includes buy/sell buttons and enhanced visibility of the net change and volume.
- Quote Board: Displays the open, high, low, and close values.
- Orders and Positions: Highlights key account details, including account summary, cancelled orders, exceptions, filled orders, open positions, parked orders, purchases, sales, and working orders.

CQG Data Factory™



- The industry's cleanest market data is available at <https://cqgdatafactory.com>.
- Market Data: Extensive historical daily data spans decades, and over seven years of intraday data is available.
- Data Categories: Futures, cash commodities, cash currencies, equity indices, and US Treasury benchmarks.
- Data Types: Time & sales (tick-by-tick), intraday bar data (1-240-minute intervals), daily bar data, and daily volume and open interest.
- Online Store Features: Allows you to set up accounts, select markets, modify and confirm orders, select formatting and delivery options, checkout, save, and download orders.

Find Out More About...

- Details
- CQG Data Factory
- CQG API
- FCMs and CQG
- CQG IC System Requirements

Details

Market Data

CQG offers data from exchanges worldwide. Visit www.cqg.com for more information.

- **Futures:** Data from the top futures exchanges with continually expanding coverage.
- **Fixed Income:** Fixed income data from ICAP BrokerTec, BGC Market Data, and Tullett Prebon Information.
- **Foreign Exchange:** FX data from EBS, CQG FX Index™, and CQG Comprehensive Index™.
- **Options:** Analysis with more than ninety studies and indicators and access to third-party services.
- **Indices:** Indicators, such as Dow Jones Industrial Average, Global Industrials, and Sector Indices.
- **Cash:** Currency instruments, cross forwards, LIBORS, Swaptions, Tullett Sovereign Debt, and more.
- **Equities:** Stocks from around the world.
- **XData:** Your proprietary data imported into CQG IC.

Quote Displays

- **Market Watch:** Displays the last trade and net change for a single contract: futures, options, equities, indices, fixed income, spreads, and ratios.
- **Quote Board:** Displays the open, high, low, last trade, and net change from the previous close, bids and offers or actual trades, spreads, and ratios.
- **Custom Quote Board:** Includes over two hundred market quotes and data fields for display, including study values applied to the symbol.
- **Quote SpreadSheet:** Displays the symbol by row and over two hundred market quotes and data fields available as columns.
- **Enhanced Quote SpreadSheet:** Includes customizable cells, spreadsheet-style layout, and over two hundred market quote and data fields.
- **Time & Sales Data:** Details trades, bids, asks, corrections, and volume in a tabular form.
- **Spread Matrix and Spread Pyramid:** Allows you to monitor and trade both synthetic and exchange-traded spreads and to view volume for each spread graphically, numerically, or both.

Trade Routing

CQG provides analysis and trade execution in one package.

- **CQG Spreader:** Create, trade, and manage multi-legged, intermarket, intramarket, and cross-exchange spreads, and effectively manage incomplete orders. The CQG Spreader allows you to access the CQG Spreader Core, our exchange-located servers that cause the modification and execution of second legs to occur in less than one millisecond.
- **Exchange Connectivity:** Connect to more than thirty-five exchanges worldwide. Visit www.cqg.com/fcmpartners for a list of FCMs and their connecting exchanges.
- **DOMTrader:** View market transparency and the exchange's order book of resting bid and ask orders with size. From this trading tool, you can easily change markets using the market tabs, choose order durations, select order types, including CQG's Smart Orders, compress the price ladder, and place market or limit orders. You can also change the order size, cancel working orders, and liquidate any open positions.
- **Order Ticket:** Gain better insight on where the market is. The Order Ticket allows you to access scalper-style order entry buttons and an order management window.
- **Simple Order Ticket:** Execute trades with a simplified version of the Order Ticket, offering buy and sell options.
- **SnapTrader®:** Drag this easy-to-use tool anywhere on a chart, and trade directly from a CQG Chart. The SnapTrader provides one-click trading functionality and allows you to maximize the use of screen real estate.
- **Orders and Positions:** Monitor and manage your futures accounts using real-time prices. You can also access the Trading Summary, which shows all daily trading activity by account or across all accounts.

Trade Routing (continued)

- **Automatic Trading:** Set preferences to automatically send market orders, cancel orders, or liquidate orders to the exchange based on a CQG Alert.
- **Order Book:** Monitor bid/ask queues, and cancel working orders.
- **Enhanced Quote SpreadSheet:** Customize your own quote and trading screen, manage orders and positions, and trade multiple markets from one spreadsheet.
- **CQG Smart Orders:** Better monitor your trades by accessing CQG Smart Orders. CQG supports both exchange-supported and synthetic orders.
- **Algorithmic Order Builder:** Create unique algorithmic order types that reflect your trading strategies with familiar programming.

Technical Analysis

Charts

- **Bar:** Shows the classic open-high-low-close bar.
- **Candlestick:** Consists of one, two, or three (bar) patterns based on the popular Far East charting technique.
- **Continuation:** Transitions charts as one month expires, generally available for futures contracts that regularly change lead months.
- **Constant Volume Bar:** Shows tick or actual volume when available, and determines the open, high, low, and close of the chart, not time.
- **Equalize Sessions:** Adjusts the price data so there is no overnight gap between the previous session's close and the next session's open.
- **Fill Gap:** Fills in time slots that have no activity using the previous bar's close as the open, high, low, and close for the bar with no activity.
- **Line:** Connects closing prices with a straight line.
- **Market Profile:** Uses letters to plot the prices that occur during successive thirty-minute periods.
- **Market Profile Value Area (MPVA) Expanded:** Displays the value areas and points of control over time.
- **No Gap:** Shows removed intervals when there is an interval with no trading.
- **Percent Bar:** Shows percentages from a selected percent scale.
- **Point & Figure:** Shows Xs for upward price trends and Os for downward price trends.
- **Tick:** Connects each trade by a line.
- **TFlow:** Displays the percentage of executed volume at the ask price versus the bid price.
- **Yield Bar:** Plots the yield for debt instruments.

Options

- **Basic Options Package:** CQG provides sophisticated options analysis using real-time price quotes.
 - **Options Window:** Displays market data and Greeks for calls and puts.
 - **Options Graph:** Plots individual Greeks, volume, and open interest.
- **Advanced Options Package:** Includes the Basic Options Package plus:
 - **Strategy Analysis:** Performs what-if scenarios using forty-three built-in strategies.
 - **Options Calculator:** Calculates what-if scenarios for individual contracts.
 - **Volatility Workshop:** Performs volatility analysis.
 - **What-If Models:** CQG offers Black, Black-Scholes, Bourtois, Cox-Ross-Rubinstein (Binomial), Garman-Kohlhagen, Merton, and Whaley (Barone-Adesi-Whaley Quadratic) models.

Pointer Tools

- **Ellipse:** Plot an ellipse on the chart to highlight price data.
- **Rectangle:** View select data by plotting a rectangle on the chart.
- **Horizontal Line:** Identify support and resistance levels across the chart.
- **Text:** Annotate your charts by adding and modifying a text box.
- **Currency:** Calculate the dollar gain or loss between two points on the chart.

Pointer Tools (continued)

- **Cycle Finder:** Select one point on the chart, and plot lines an equal distance apart.
- **Fibonacci:** Plot retracements, extensions, circles, time retracements, and time zones based on Fibonacci ratios.
- **Gann:** Plot geometric angles in conjunction with time and price.
- **Linear Regression:** Plot channels based on the best fit line between two points.
- **Pitchfork:** Set lines that consist of three user-selected points where the median line bisects the mid-point of the second and third points.
- **Probability Projection:** Plot parabolas that include probable future chart values.
- **Trend:** Plot a simple trend line.
- **Trend Channel:** Plot two parallel lines and an optional third line related to the initial lines.

Misc Tools

- **Studies:** Access over one hundred classic and custom studies.
- **Trade System and Backtesting Tools:** Analyze past trading activity, and build strategies based on that activity.
 - **Trading Systems:** Backtest trade setups over any time frame.
 - **Entry Signal Evaluator:** Evaluate the effectiveness of specific buy and sell signals over a user-specified time period.
 - **Trade System Optimizer:** Use one of two optimization algorithms, exhaustive or genetic, to determine which set of user-defined parameter values yield the best result.
- **Formula Builder:** Use point-and-click to create new user studies.
 - **Quote Formulas:** Calculate relationships between quoted values as well as create spread strategies.
 - **Conditions:** Evaluate a situation and return a true or false signal.
 - **User Values:** Create variables and color-code price bars based on conditions.
 - **Custom Studies:** Create custom studies built upon studies, bar values, conditions, user values, mathematical functions, and logic.
 - **Custom Sessions:** Design sessions specific to your trading strategies.
- **Order Display Study:** Display real-time study values from a chart on the DOMTrader or the Order Ticket price column.
- **Third-Party Studies:** Incorporate study packages from industry-leading analysts into your trading strategies.
 - **Tom DeMark Indicators™:** Identify low risk and high risk opportunity zones for almost every market over every time period.
 - **ATM Studies:** Monitor trading opportunities supported with intuitive proprietary studies and proactive money management techniques.
 - **Kase StatWare:** Manage trading, entry, and money management, and access sophisticated, proprietary indicators designed to fine-tune entries and exits.
 - **Profitunity Wiseman®:** Apply Bill Williams' three-step approach to trading virtually any market or time frame.
 - **Security Market Research (SMR):** Benefit from momentum trading using the SMR Trading System, an application designed to meet the needs of traders with diverse trading styles and goals.
 - **Bullish Consensus®:** Access the daily tracking of the futures market sentiment, which reflects the open positions of the advisers as of that day's market close.
 - **Shaun Downey Studies:** Identify trends within their infancy, and quantify swing patterns by connecting them with time, range, and volume. CQG offers twenty-nine studies detailed in Downey's book [Trading Time](#).
- **Market Scan:** Execute scans to search for multiple conditions across any set of instruments in multiple time frames.
- **Volume Profile Study:** Apply the traded volume at each price to any CQG Chart.
- **Pre-Trade Analytics:** Performs pre-trade and post-trade risk evaluation using a wide variety of parameters.

News

Our news service allows you to track key market-moving releases to better monitor trading decisions.

- **Usability:** View smooth-scrolling headlines, showing the most recent headlines larger and the older headlines smaller.
- **Searching:** Take advantage of powerful filtering, searching, and sorting tools to see only those headlines relevant to you.
- **Timeline:** Easily navigate to a specific time of day, track the volume of news throughout the day, and monitor news flash activity.
- **Access:** Click specific news stories to view key market release details.

News (continued)

- **Navigation:** Scroll to a particular set of headlines.
- **Layout:** Maximize window space, and reduce unwanted clutter.
- **Convenience:** Save time by viewing stories sorted by topic.
- **Synchronization:** Link any news headline to a CQG Chart.
- **Print and E-mail:** Send market-moving releases to fellow traders.
- **Services:** Apply global news coverage services to your trading strategies. Services include Dow Jones Newswires, The Hightower Report, Interfax News, Market News International, and Need to Know News.
 - **Languages:** Subscribe to Dow Jones Newswires in a number of local languages: English, French, German, Italian, Japanese, Dutch, Portuguese, and Russian, and subscribe to Interfax News in English and Russian.
- **Proprietary News:** Access a secure delivery of proprietary news feeds.

Additional Features

- **Preset Pages:** Over seventy-five professionally laid-out pages combining quotes, charts, news, and order routing are available at www.cqg.com.
- **Contract Specs:** You can select any quote or chart to display a detailed description of the instrument.
- **Quality Data:** Primary and failover data centers ensure uninterrupted market data. A data quality group monitors our network twenty-four hours a day, seven days a week.
- **Exceptional Customer Support:** Our award-winning customer support teams operate from eleven locations across the globe and strive to exceed customer expectations twenty-four hours a day. You can contact Customer Support by Live Chat, the CQG Message Center, or e-mail at websupt@cqg.com.
- **Database Management:** Exchange-generated corrections and fast market indications are relayed in real time on the CQG dataline. No user-end management is required.

CQG API

- The ability to export CQG market data and analytics to external applications.
- Can be invoked from VB, C#, C++, or other programming languages that support automation technology.
- Excellent for those seeking a customized data delivery or auto-trading solution.
- CQG's custom plug-in to complement your trading systems.
- Includes market data, quotes, sessions, and other metadata properties.
- Allows for trading on all exchanges to which CQG connects.
- Intuitive application for those familiar with the Excel Object Model.
- Provides MarketDelta's presentation of CQG Data.
- Support documentation available at www.cqg.com/cqgapi.
- **Hosting Solutions:** Allows you to seamlessly deliver market data, analytics, and order routing to external applications.

FCMs and CQG

- Complete coverage of worldwide financial exchanges.
- Everything the FCM needs, from exchange connections to account management.
- CQG Hosted Exchange Gateways: A secure, low-latency order routing solution installed and maintained by CQG for partner clearing firms.
- Assistance from CQG's knowledgeable support staff.
- CQG Trader: Provides the same high-performance market data and electronic trading as CQG IC without charting and analytics.
 - CQG Trader Private Labeling: Allows you to display your company's logo on the startup screen or as an application icon in English, Russian, or Japanese.
- CQG Integrated Client: CQG's flagship product that offers access to market data, world-class analytics, and industry-leading electronic trading.
- Customer Account Service Tool (CAST): The industry's most robust automated pre-trade risk analysis.
 - Risk Console Template: A straightforward risk settings application in CAST.
 - Account types supported: CQG supports single accounts, give-up accounts, and group accounts with shared purchasing power.
 - Eurex Risk Algorithm: Includes final review.
- Complete list of FCMs and exchange connectivity at www.cqg.com/fcmpartners.

CQG IC System Requirements

CQG data is delivered via the Internet.

- **Processor:** Dual-Core. Intel® Core™2 Duo (2.33 Ghz or better) suggested. Intel Core i5 or i7 is recommended.
- **Operating System:** Windows® 7, Windows Vista, or Windows XP. Windows 2000 is not supported.
- **Memory:** 4GB RAM. 6GB or better for Vista or Windows 7.
- **Hard Drive:** 160GB, IDE-100, 7200RPM with 4GB of free hard disk space. 320GB with 6GB-10GB free hard drive space recommended. 30% to 40% of free disk space is advisable for overall system performance. SCSI encouraged.
- **Network Adapter:** Network Interface Card (NIC) configured to use TCP/IP. (Required for DSL, Cable, or T1).
- **Internet Access:** CQG requires Internet service via a high-speed connection, such as DSL, cable, or fixed wireless/wireless local loop (WLL). Wireless Internet connections are not recommended, especially broadband over a WiFi card. Dial-up is not supported.
- **Video Card:** Dual-port graphics adapter with 128Mb of memory, 64Mb per port. 256Mb recommended with 128Mb per port supporting DirectX® version 9.x.
- **System Setting Specifications:** Hibernate and stand by modes cannot be used on a system running CQG. Hard drive power-saving features should also be disabled.
- **Monitor Setups:** These specifications are appropriate for single and dual monitor setups. If you have three or four monitors, you will need a higher performance processor, video card, and network connection.
- **Optional:** Sound 16-bit Sound Blaster™-compatible sound card.

Contact Us

www.cqg.com | websales@cqg.com | Or call your CQG sales representative

US 1-800-525-7082 | **Japan** +81 (0) 3-3286-6633 | **UK** +44 (0) 20-7827-9500 | **Russia** +7 495-795-2410

France +33 (0) 1-74-18-07-81 | **Germany** +49 (0) 69-6677-7558-0 | **Singapore** +65 6494-4911 | **Australia** +61 (2) 9235-2009