



7/7/2017 22:40 - Screen Clipping

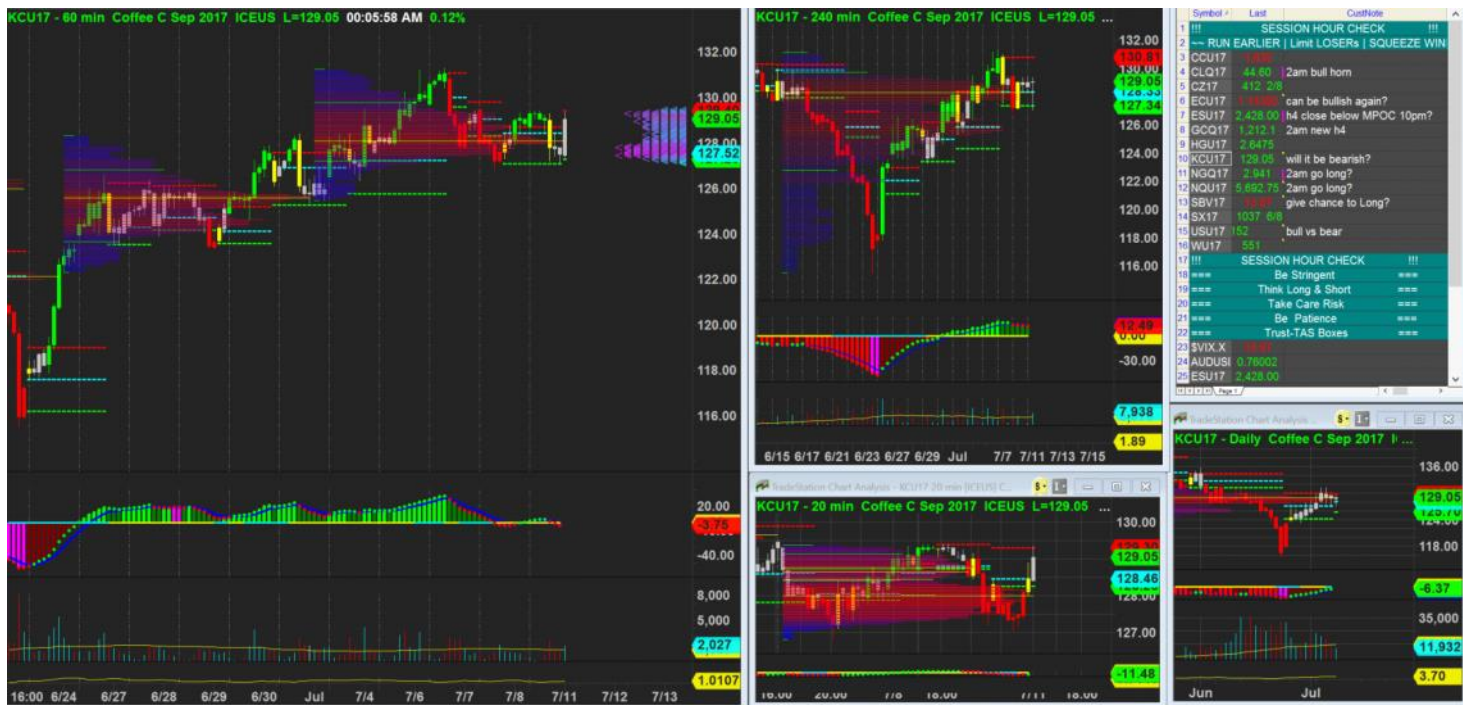
Can consider low risk entry, 68% but acceptable for low risk entry

Score	Trend	Location	H1 Navi	H1 Navi	H4 Navi	plywood	inside-box	Vol Gap	H1 headwinds	H4 headwinds	H1 Defense	H4 Defense	Potential RR	Coffee
68.38 %	+ H4 + H1	- H4 - H1	Good Swing	+0	+10	- H4 + H1	- H4 - H1	+ H4 + H1	1	2	4	2	3	\$350.00



8/7/2017 00:13 - Screen Clipping

Not going to do long for now. H4 no plywood support.



11/7/2017 00:06 - Screen Clipping

New h1 seem very interesting.
H4 fake out short now coming back above h4 mpo.

Score	Trend	Location	H1 Navi	H1 Navi	H4 Navi	plywood	inside-box	Vol Gap	H1 headw inds	H4 headw inds	H1 Defens e	H4 Defens e	Potent ial RR	Coffee
75.21 %	- H4 + H1	+ H4 + H1	Supported	+0	-10	+ H4 + H1	- H4 - H1	+ H4 + H1	1	2	5	4	1	\$1,240.00

If reclose above h1 I can consider going long

TOP	129.4000	TOP	130.8100
POC	127.5200	POC	128.3300
BOT	127.2900	BOT	127.3400
Box Height	2.1100	Box Height	3.4700
20% range to catch	0.422	20% range to catch	0.694
Long Catch	129.822	Long Catch	131.504
Short Low Risk	128.978	Short Low Risk	130.116
Long Low Risk	127.712	Long Low Risk	128.034
Short Catch	126.868	Short Catch	126.646
Plywood Resistance	89.10%	Plywood Resistance	71.47%
Plywood Support	10.90%	Plywood Support	28.53%



11/7/2017 00:29 - Screen Clipping

OCO order: fade buy or breakout
 Since h4 close above h4 mpoC again

Score	Trend	Location	H1 Navi	H1 Navi	H4 Navi	plywood	inside-box	Vol Gap	H1 headwinds	H4 headwinds	H1 Defense	H4 Defense	Potential RR	Coffee
72.65 %	- H4 + H1	+ H4 + H1	Supported	+0	-10	+ H4 + H1	- H4 - H1	+ H4 + H1	2	2	4	4	1	\$1,240.00

Low risk entry mean more headwinds, but score still ok to go.



12/7/2017 00:22 - Screen Clipping

Not chasing short

Score	Trend	Location	H1 Navi	H1 Navi	H4 Navi	plywood	inside-box	Vol Gap	H1 headwinds	H4 headwinds	H1 Defense	H4 Defense	Potential RR	Coffee
66.67 %	+ H4 + H1	+ H4 + H1	Supported	-10	+10	- H4 - H1	- H4 - H1	+ H4 + H1	1	2	5	2	1	\$1,356.39