



5/7/2017 14:23 - Screen Clipping

Waiting for short

| Score | Trend | Location | H1 Navi | H1 Navi | H4 Navi | plywood | inside-box | Vol Gap | H1 headwinds | H4 headwinds | H1 Defense | H4 Defense | Potential RR | Euro |
|---------|--------------|--------------|----------|---------|---------|--------------|--------------|--------------|--------------|--------------|------------|------------|--------------|----------|
| 70.09 % | + H4 + H1 | + H4 + H1 | Flattish | -10 | +0 | - H4 + H1 | - H4 - H1 | + H4 + H1 | 1 | 1 | 5 | 5 | 0.75 | \$500.00 |



5/7/2017 20:09 - Screen Clipping

Wait for more info from h1, i.e navi grow bigger then only I start tightening



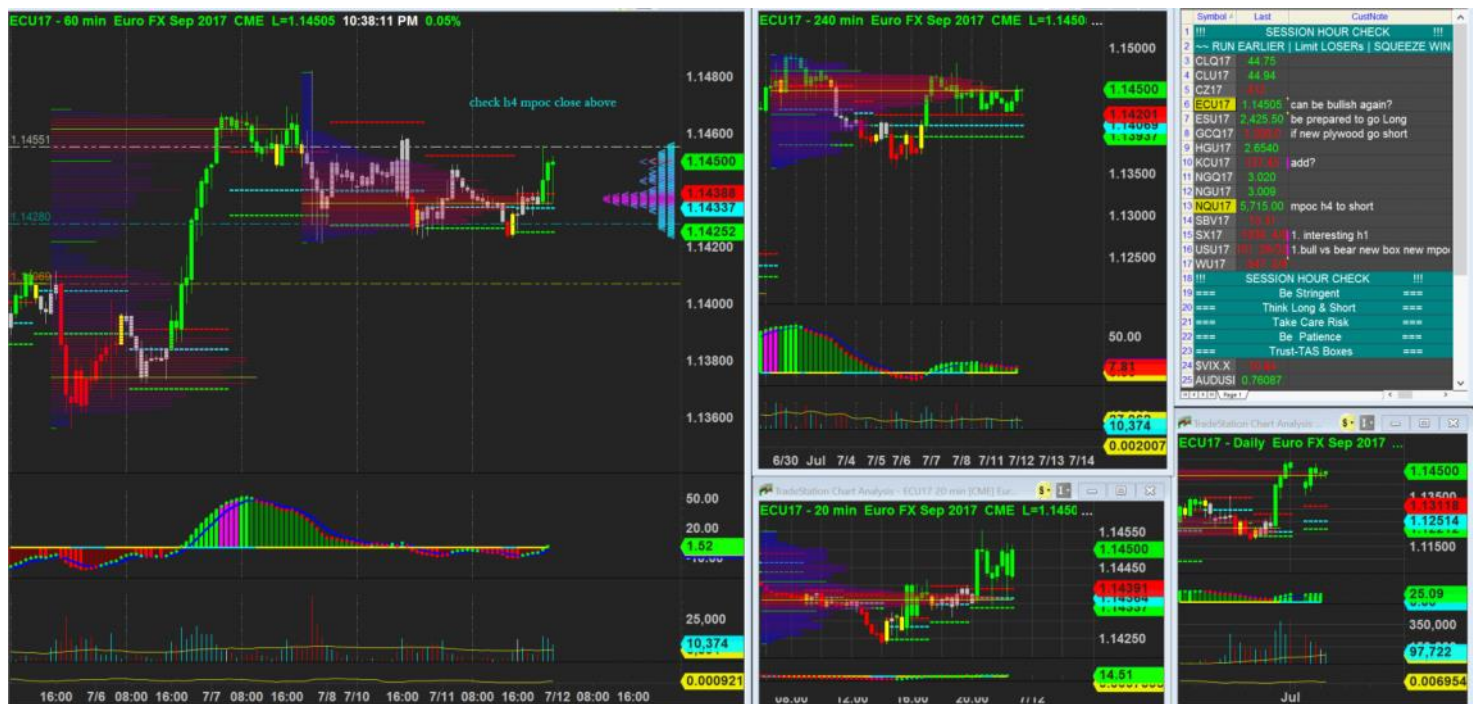
6/7/2017 00:02 - Screen Clipping

| Score | Trend | Location | H1 Navi | H1 Navi | H4 Navi | plywood | inside-box | Vol Gap | H1 headwinds | H4 headwinds | H1 Defense | H4 Defense | Potential RR | Euro |
|---------|--------------|--------------|-----------|---------|---------|--------------|--------------|--------------|--------------|--------------|------------|------------|--------------|----------|
| 72.65 % | + H4 + H1 | + H4 + H1 | Refreshed | -20 | +0 | - H4 + H1 | - H4 - H1 | + H4 + H1 | 1 | 1 | 5 | 5 | 0.75 | \$562.50 |



6/7/2017 00:03 - Screen Clipping

Adjusted tech high +3 stay above h4 box level for now watching for tonight FOMC



11/7/2017 22:38 - Screen Clipping

Still not quite there yet for a good long setup

| Score | Trend | Location | H1 Navi | H1 Navi | H4 Navi | plywood | inside-box | Vol Gap | H1 headwinds | H4 headwinds | H1 Defense | H4 Defense | Potential RR | Euro |
|---------|-----------|-----------|---------------|---------|---------|-----------|------------|-----------|--------------|--------------|------------|------------|--------------|----------|
| 63.25 % | + H4 + H1 | + H4 + H1 | No Good Swing | +0 | -10 | - H4 - H1 | - H4 - H1 | + H4 + H1 | 1 | 1 | 5 | 3 | 0.75 | \$437.50 |



12/7/2017 23:33 - Screen Clipping

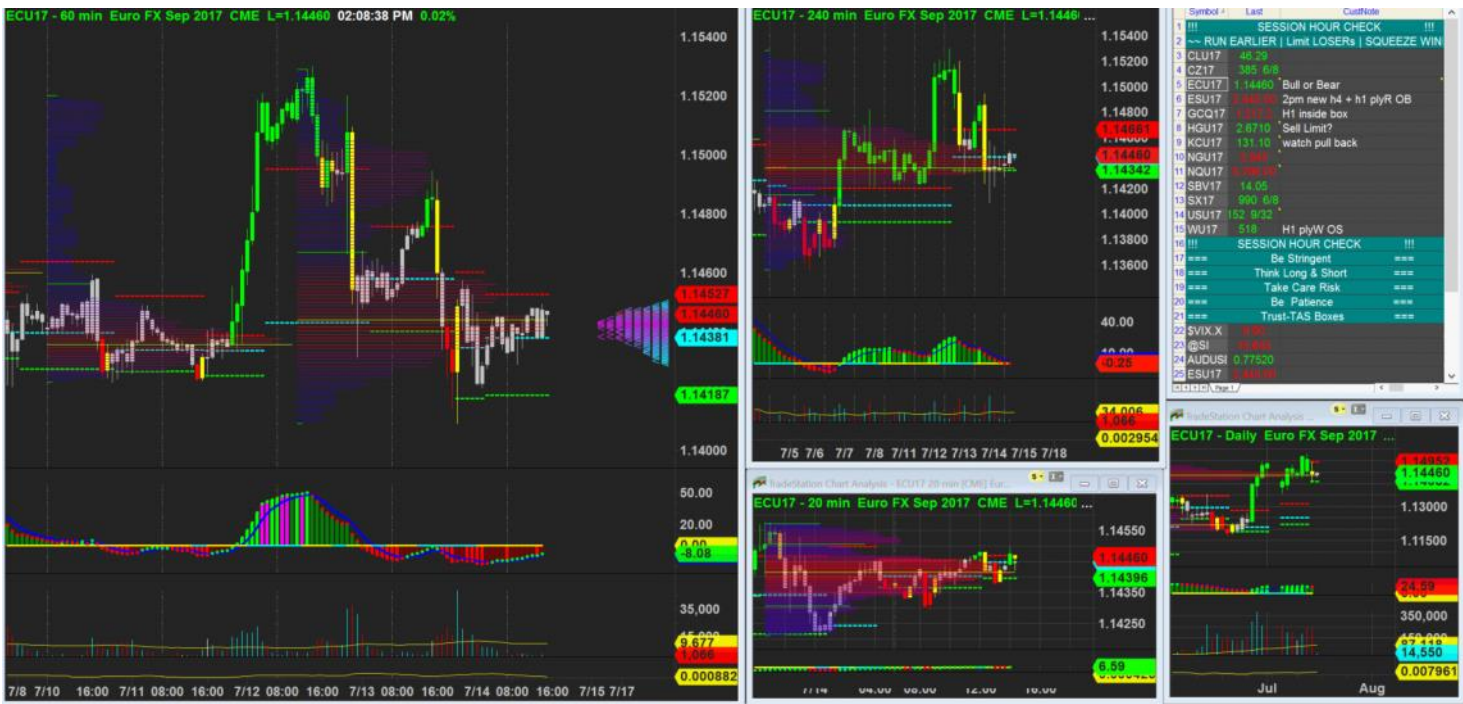
If consolidate near here I can consider h1 navi refresh and supported then it could be a good long signal with low risk add on



13/7/2017 21:29 - Screen Clipping

Not likely I will go for long if breakout. Unless new information emerge in favour.

| Score | Trend | Locati on | H1 Navi | H1 Navi | H4 Navi | plywo od | inside- box | Vol Gap | H1 headw inds | H4 headw inds | H1 Defens e | H4 Defens e | Potent ial RR | Euro |
|------------|--------------|--------------|---------------------|------------|------------|--------------|----------------|--------------|---------------------|---------------------|-------------------|-------------------|------------------|--------------|
| 67.52 % | + H4 + H1 | - H4 + H1 | No Good Swing | +10 | -10 | + H4 - H1 | - H4 - H1 | + H4 + H1 | 2 | 2 | 5 | 4 | 0.5 | \$625. 00 |



14/7/2017 14:08 - Screen Clipping

| Score | Trend | Location | H1 Navi | H1 Navi | H4 Navi | plywood | inside-box | Vol Gap | H1 headw inds | H4 headw inds | H1 Defens e | H4 Defens e | Potent ial RR | Euro |
|---------|--------------|--------------|---------------------|---------|---------|--------------|--------------|--------------|---------------|---------------|-------------|-------------|---------------|--------------|
| 73.50 % | + H4 + H1 | - H4 + H1 | No Good Swing | +10 | +0 | + H4 - H1 | - H4 + H1 | + H4 + H1 | 1 | 2 | 5 | 4 | 0.5 | \$625. 00 |



14/7/2017 15:08 - Screen Clipping
Order is in



14/7/2017 21:04 - Screen Clipping

Tightening after big break above box. Giving up 1 line of defense and watching to tighten further the next bar



14/7/2017 22:02 - Screen Clipping

Wanted to tighten up but still staying below h4 plywood so end up tighten up 2 ticks. Watching out and ready to tighten up anytime



14/7/2017 23:04 - Screen Clipping

Wanted to push in but again, 100bars mpoc is there so I stay few ticks below it n then give in for today session low - 1tick



15/7/2017 00:02 - Screen Clipping

Waiting for more info, i.e. navigator to hit overbought then I will tighten again, or new box



15/7/2017 03:02 - Screen Clipping

Higher close in h1 so I tightening again. Give up h4 lva but still keep h4 mpoc for now. Waiting for a further distance from here so I can push to h1 HVA> for now h1 hva still v near h1 mpoc so I stay below the congestion



17/7/2017 09:38 - Screen Clipping

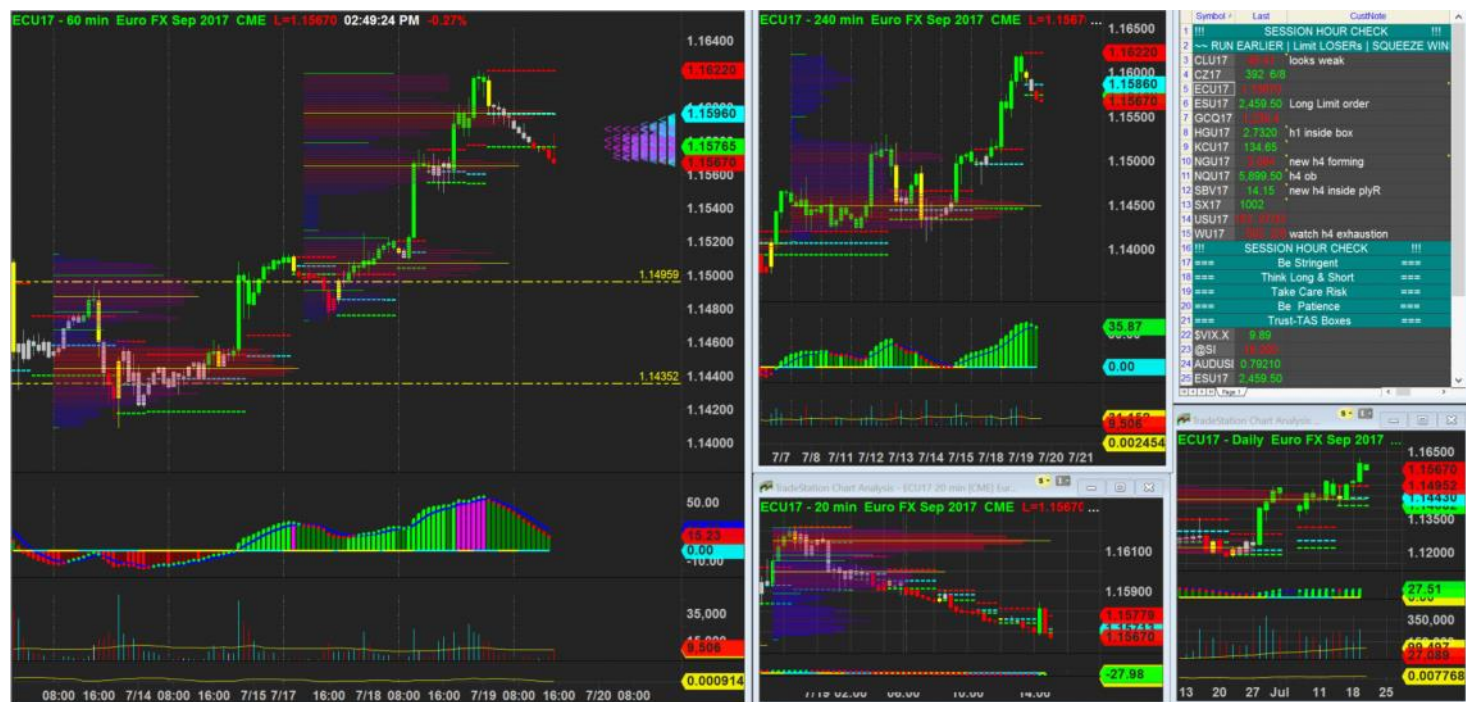
Push below new box and weekly mpoc for now



17/7/2017 19:21 - Screen Clipping

Out form Long but not going back this time

| Score | Trend | Location | H1 Navi | H1 Navi | H4 Navi | plywood | inside-box | Vol Gap | H1 headwinds | H4 headwinds | H1 Defense | H4 Defense | Potential RR | Euro |
|---------|--------------|--------------|-----------|---------|---------|--------------|--------------|--------------|--------------|--------------|------------|------------|--------------|----------|
| 60.68 % | + H4 + H1 | - H4 + H1 | Refreshed | -10 | -10 | - H4 - H1 | - H4 - H1 | + H4 + H1 | 1 | 2 | 5 | 2 | 1 | \$312.50 |



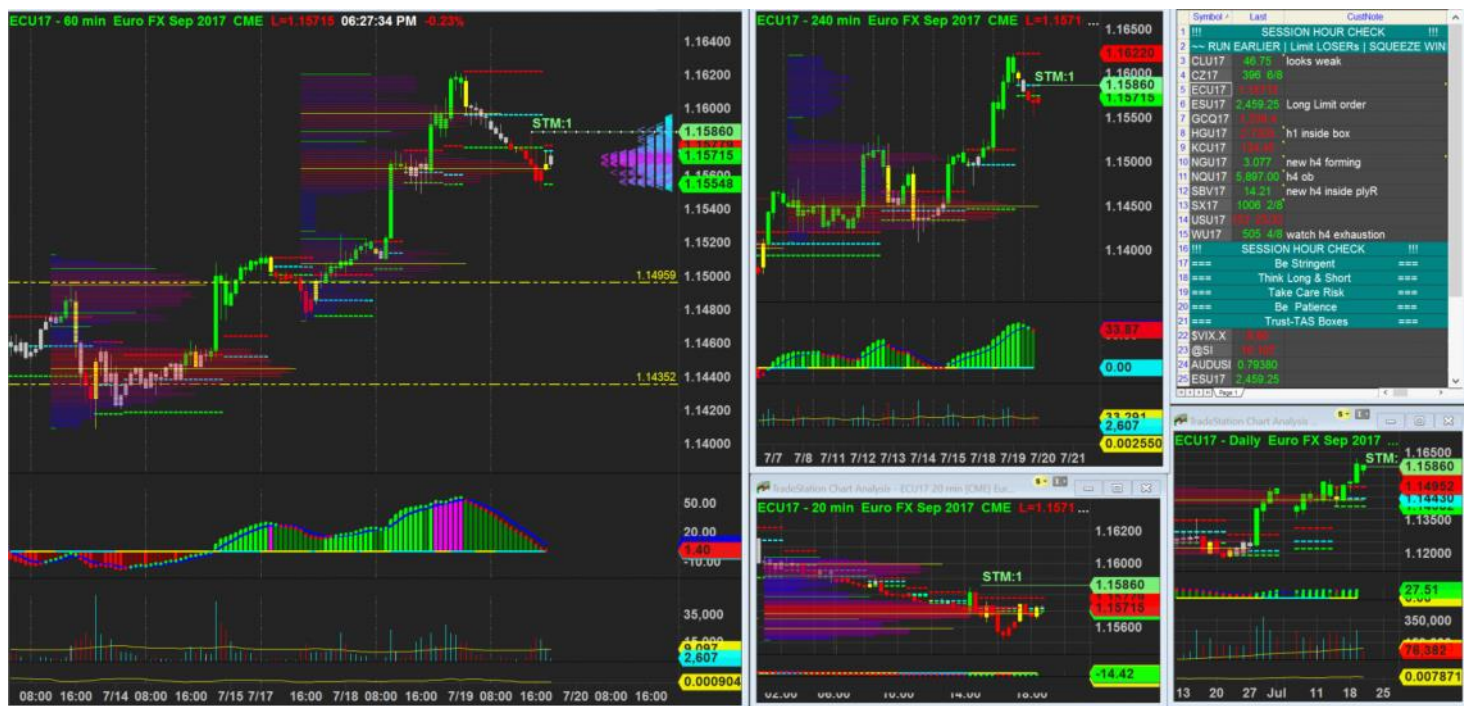
19/7/2017 14:49 - Screen Clipping

| Score | Trend | Location | H1 Navi | H1 Navi | H4 Navi | plywo | inside-box | Vol Gap | H1 headw inds | H4 headw inds | H1 Defens e | H4 Defens e | Potent ial RR | Euro |
|---------|--------------|--------------|------------|---------|---------|--------------|--------------|--------------|---------------|---------------|-------------|-------------|---------------|----------|
| 71.79 % | + H4 + H1 | + H4 + H1 | Good Swing | +20 | +30 | - H4 - H1 | - H4 - H1 | + H4 - H1 | 2 | 1 | 5 | 4 | 0.5 | \$750.00 |



19/7/2017 14:50 - Screen Clipping

No good feeling but lets see.



19/7/2017 18:27 - Screen Clipping



20/7/2017 18:55 - Screen Clipping

Staying above h4 lva for now, also cover strong tech high from prior session



20/7/2017 20:14 - Screen Clipping

Wanted to tighten further after h1 break and close lower but cant find a good spot just yet. Keep close eye on it.



25/7/2017 14:04 - Screen Clipping

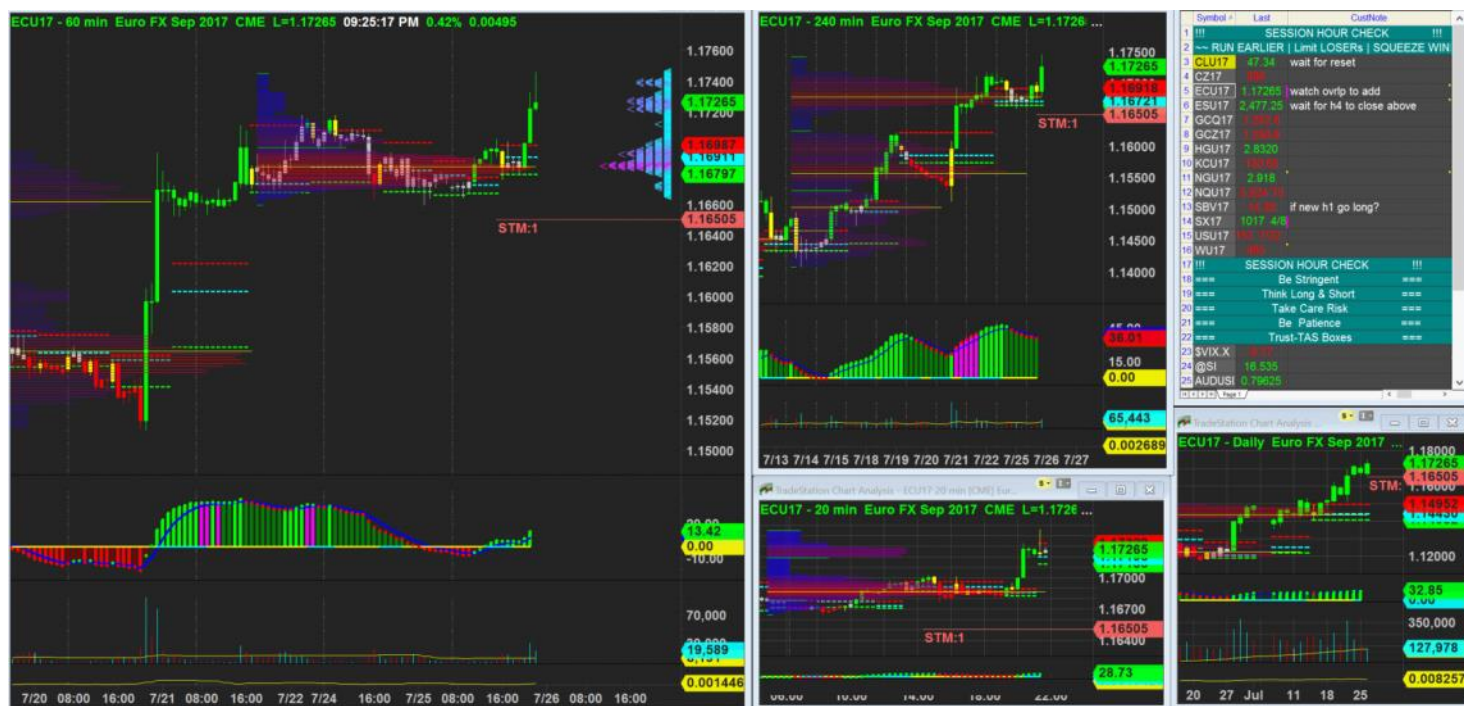
| Score | Trend | Location | H1 Navi | H1 Navi | H4 Navi | plywood | inside-box | Vol Gap | H1 headw inds | H4 headw inds | H1 Defens e | H4 Defens e | Potent ial RR | Euro |
|---------|--------------|--------------|---------------|---------|---------|-----------|------------|-----------|---------------|---------------|-------------|-------------|---------------|----------|
| 75.21 % | + H4 + H1 | + H4 + H1 | No Good Swing | +0 | -30 | + H4 - H1 | - H4 + H1 | + H4 + H1 | 1 | 1 | 5 | 5 | 0.75 | \$500.00 |
| 73.50 % | + H4 + H1 | + H4 + H1 | No Good Swing | +0 | -30 | + H4 - H1 | - H4 + H1 | + H4 + H1 | 1 | 1 | 5 | 5 | 0.5 | \$600.00 |

Stay wider for pass few days tech low.

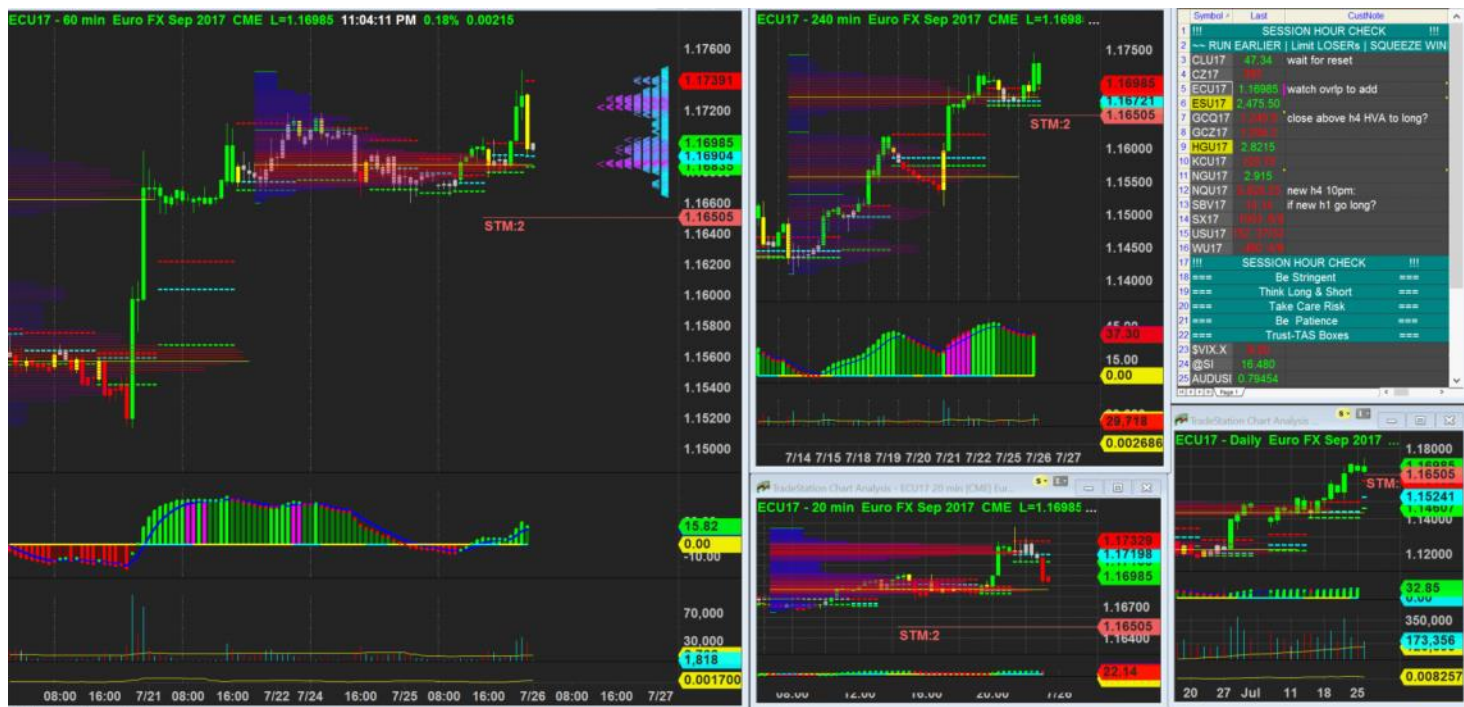
Like breakout from a dense vol congestion area in h1,

like h4 mpocs closer to h4 lva,

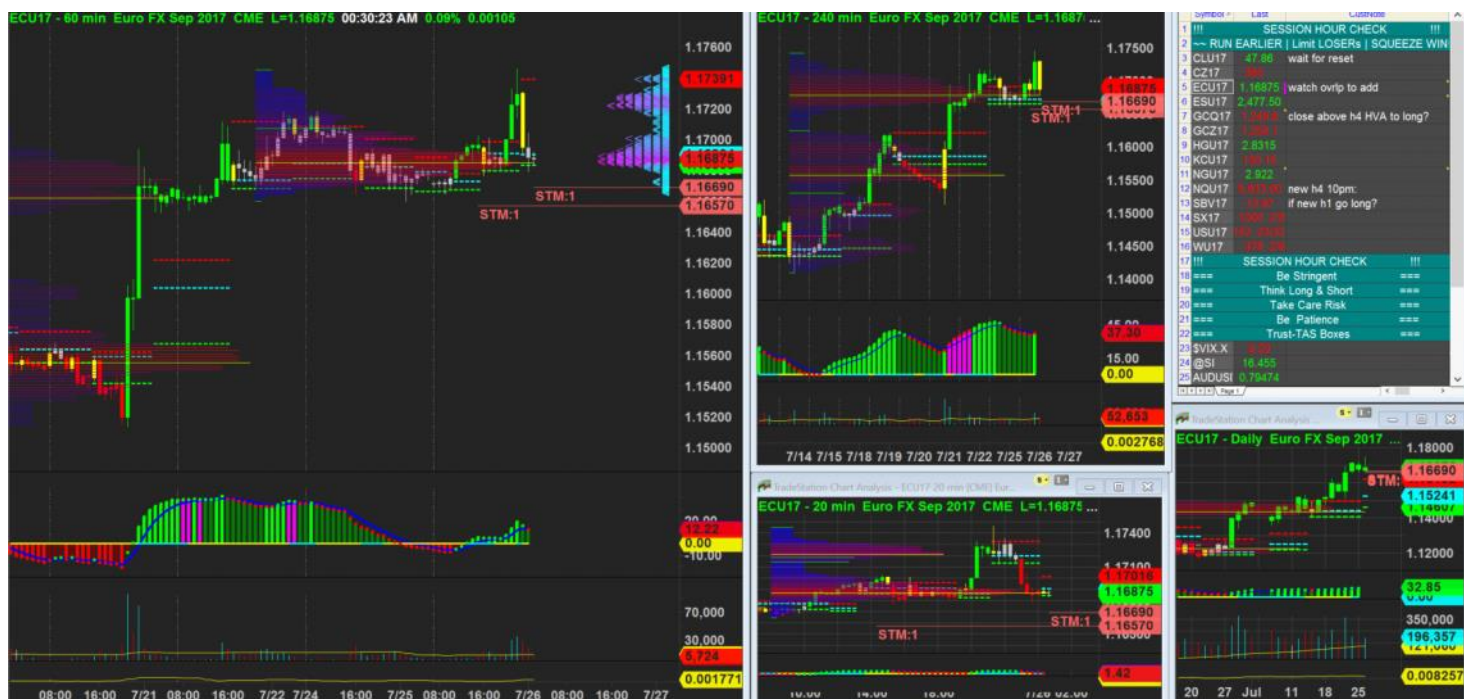
like h4 plywood support which tested and hold and reclose above box



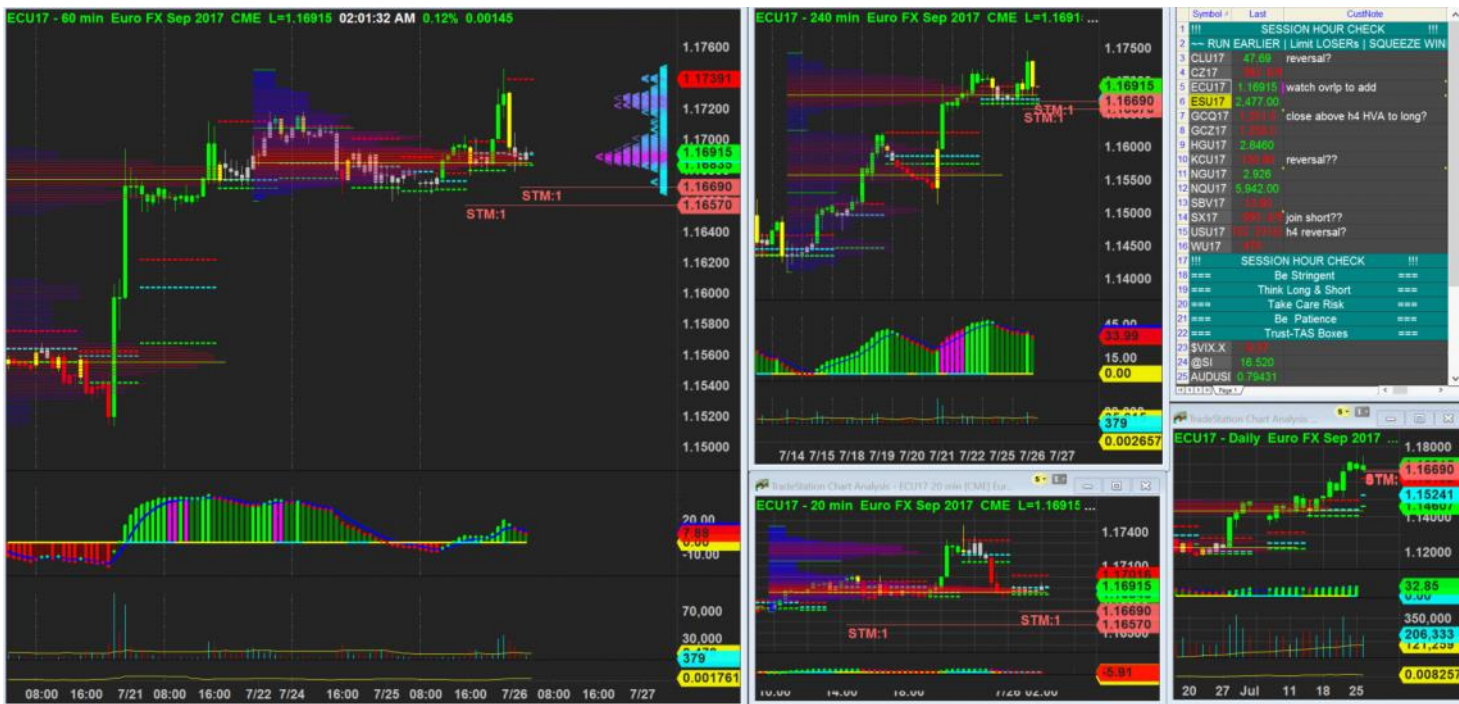
Waiting for more information so I can tighten my stop.



Market coming back but still trading above h4, with h1 new plyw tall box and h1 mpoc supportive. So I added one more Long. Stop wide for now.

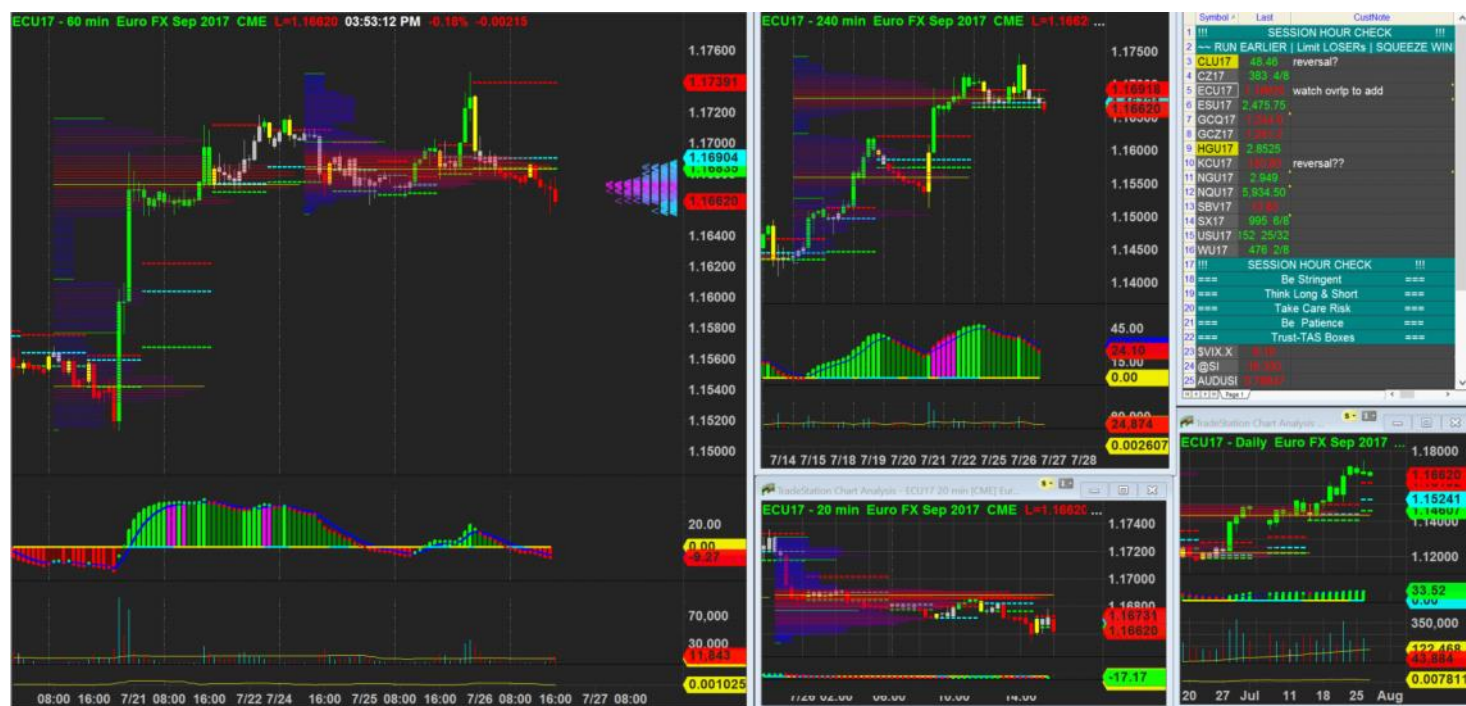


H1 mpoc n lva tested and hold. I tighten my stop also towards the original brekaout bar low and slightly lower than h4 lva



26/7/2017 02:01 - Screen Clipping

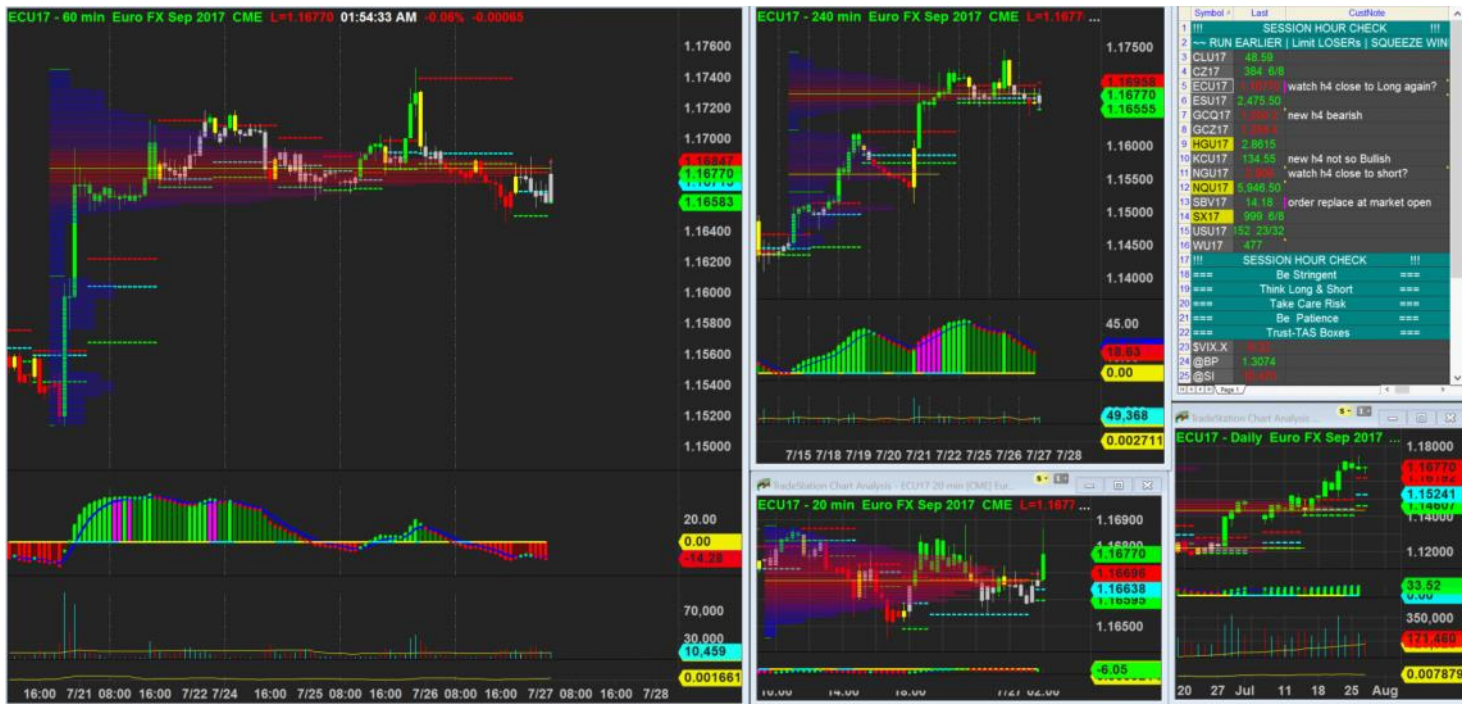
Wanted to add one more low risk Long but h4 reclose within box so not valid anymore
 Lets see if this h1 plyw can hold.



26/7/2017 15:53 - Screen Clipping

Not chasing Short

| Score | Trend | Location | H1 Navi | H1 Navi | H4 Navi | plywood | inside-box | Vol Gap | H1 headwinds | H4 headwinds | H1 Defense | H4 Defense | Potential RR | Euro |
|---------|--------------|--------------|------------|---------|---------|--------------|--------------|--------------|--------------|--------------|------------|------------|--------------|----------|
| 64.10 % | + H4 + H1 | + H4 + H1 | Good Swing | -10 | -20 | - H4 - H1 | - H4 - H1 | + H4 + H1 | 1 | 1 | 3 | 3 | 1 | \$375.00 |



27/7/2017 01:54 - Screen Clipping

New h4 doesn't support Long anymore
New h1 also not very bearish
Do nothing



28/7/2017 19:06 - Screen Clipping

Didn't want to take Long

| Score | Trend | Location | H1 Navi | H1 Navi | H4 Navi | plywood | inside-box | Vol Gap | H1 headwinds | H4 headwinds | H1 Defense | H4 Defense | Potential RR | Euro |
|---------|-----------|-----------|---------------|---------|---------|-----------|------------|-----------|--------------|--------------|------------|------------|--------------|----------|
| 59.83 % | + H4 + H1 | + H4 + H1 | No Good Swing | +0 | -20 | - H4 - H1 | - H4 - H1 | + H4 + H1 | 2 | 1 | 5 | 3 | 0.5 | \$625.00 |