



7/7/2017 22:40 - Screen Clipping

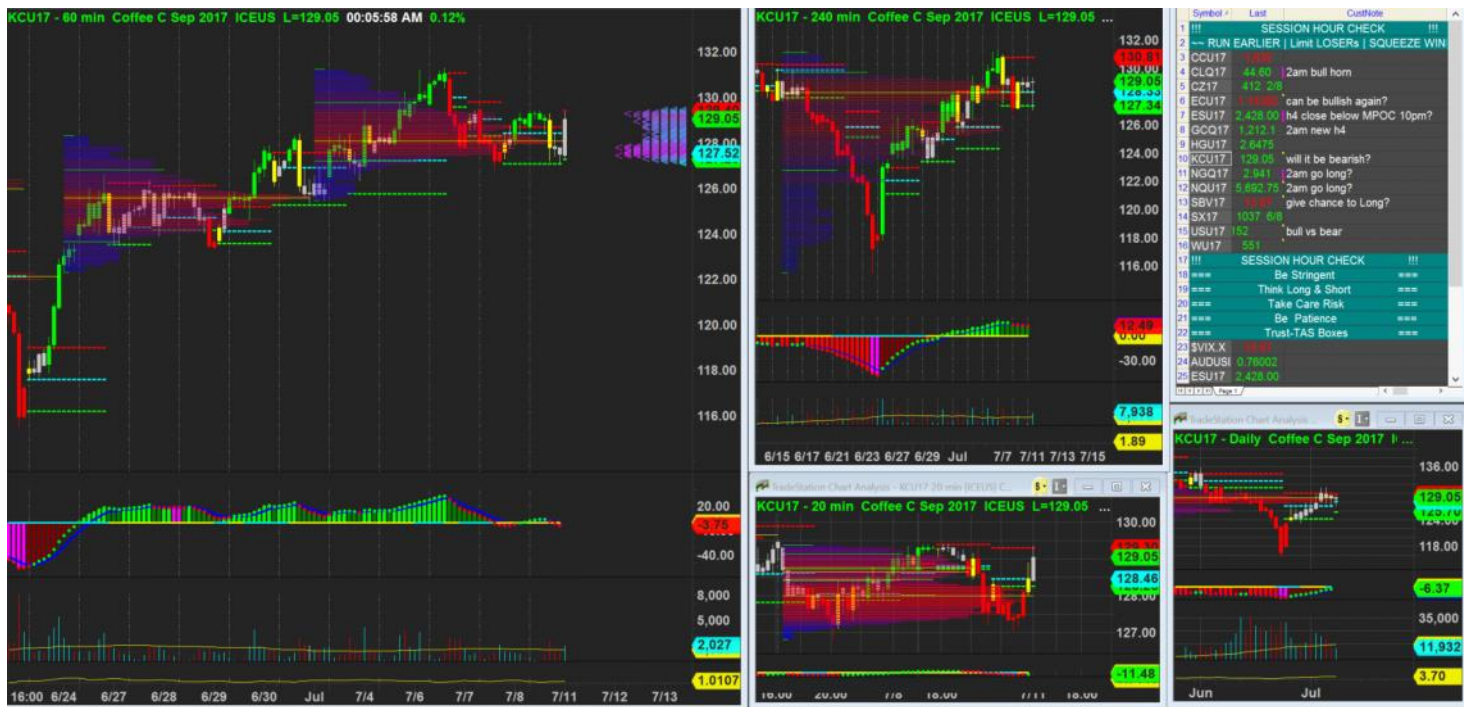
Can consider low risk entry, 68% but acceptable for low risk entry

Score	Trend	Location	H1 Navi	H1 Navi	H4 Navi	plywood	inside-box	Vol Gap	H1 headwinds	H4 headwinds	H1 Defense	H4 Defense	Potential RR	Coffee
68.38 %	+ H4 + H1	- H4 - H1	Good Swing	+0	+10	- H4 + H1	- H4 - H1	+ H4 + H1	1	2	4	2	3	\$350.00



8/7/2017 00:13 - Screen Clipping

Not going to do long for now. H4 no plywood support.



11/7/2017 00:06 - Screen Clipping

New h1 seem very interesting.  
H4 fake out short now coming back above h4 mpoC.

Score	Trend	Locati on	H1 Navi	H1 Navi	H4 Navi	plywo od	inside- box	Vol Gap	H1 headw inds	H4 headw inds	H1 Defens e	H4 Defens e	Potent ial RR	Coffee
75.21 %	- H4 + H1	+ H4 + H1	Suppo rted	+0	-10	+ H4 + H1	- H4 - H1	+ H4 + H1	1	2	5	4	1	\$1,24 0.00

If reclose above h1 I can consider going long

<b>TOP</b>	129.4000	<b>TOP</b>	130.8100
<b>POC</b>	127.5200	<b>POC</b>	128.3300
<b>BOT</b>	127.2900	<b>BOT</b>	127.3400
<b>Box Height</b>	2.1100	<b>Box Height</b>	3.4700
<b>20% range to catch</b>	0.422	<b>20% range to catch</b>	0.694
<b>Long Catch</b>	129.822	<b>Long Catch</b>	131.504
<b>Short Low Risk</b>	128.978	<b>Short Low Risk</b>	130.116
<b>Long Low Risk</b>	127.712	<b>Long Low Risk</b>	128.034
<b>Short Catch</b>	126.868	<b>Short Catch</b>	126.646
<b>Plywood Resistance</b>	89.10%	<b>Plywood Resistance</b>	71.47%
<b>Plywood Support</b>	10.90%	<b>Plywood Support</b>	28.53%



11/7/2017 00:29 - Screen Clipping

OCO order: fade buy or breakout  
 Since h4 close above h4 mpcoc again

Score	Trend	Location	H1 Navi	H1 Navi	H4 Navi	plywood	inside-box	Vol Gap	H1 headwinds	H4 headwinds	H1 Defense	H4 Defense	Potential RR	Coffee
72.65 %	- H4 + H1	+ H4 + H1	Supported	+0	-10	+ H4 + H1	- H4 - H1	+ H4 + H1	2	2	4	4	1	\$1,240.00

Low risk entry mean more headwinds, but score still ok to go.



12/7/2017 00:22 - Screen Clipping

Not chasing short

Score	Trend	Location	H1 Navi	H1 Navi	H4 Navi	plywood	inside-box	Vol Gap	H1 headwinds	H4 headwinds	H1 Defense	H4 Defense	Potential RR	Coffee
66.67 %	+ H4 + H1	+ H4 + H1	Supported	-10	+10	- H4 - H1	- H4 - H1	+ H4 + H1	1	2	5	2	1	\$1,35 6.39



13/7/2017 00:56 - Screen Clipping

Score	Trend	Location	H1 Navi	H1 Navi	H4 Navi	plywod	inside-box	Vol Gap	H1 headw inds	H4 headw inds	H1 Defens e	H4 Defens e	Potent ial RR	Coffee
64.96 %	- H4 + H1	- H4 + H1	No Good Swing	+10	+0	+ H4 - H1	- H4 - H1	+ H4 - H1	2	2	4	3	2	\$775.00

Not chasing long.

Unless if h1 close above h1 mpcoc,

Score	Trend	Location	H1 Navi	H1 Navi	H4 Navi	plywod	inside-box	Vol Gap	H1 headw inds	H4 headw inds	H1 Defens e	H4 Defens e	Potent ial RR	Coffee
70.09 %	- H4 + H1	- H4 + H1	No Good Swing	+10	+0	+ H4 - H1	- H4 - H1	+ H4 + H1	1	2	5	3	2	\$775.00

Letrs wait tmrw market open



Waiting for h4 to close then go for long limit



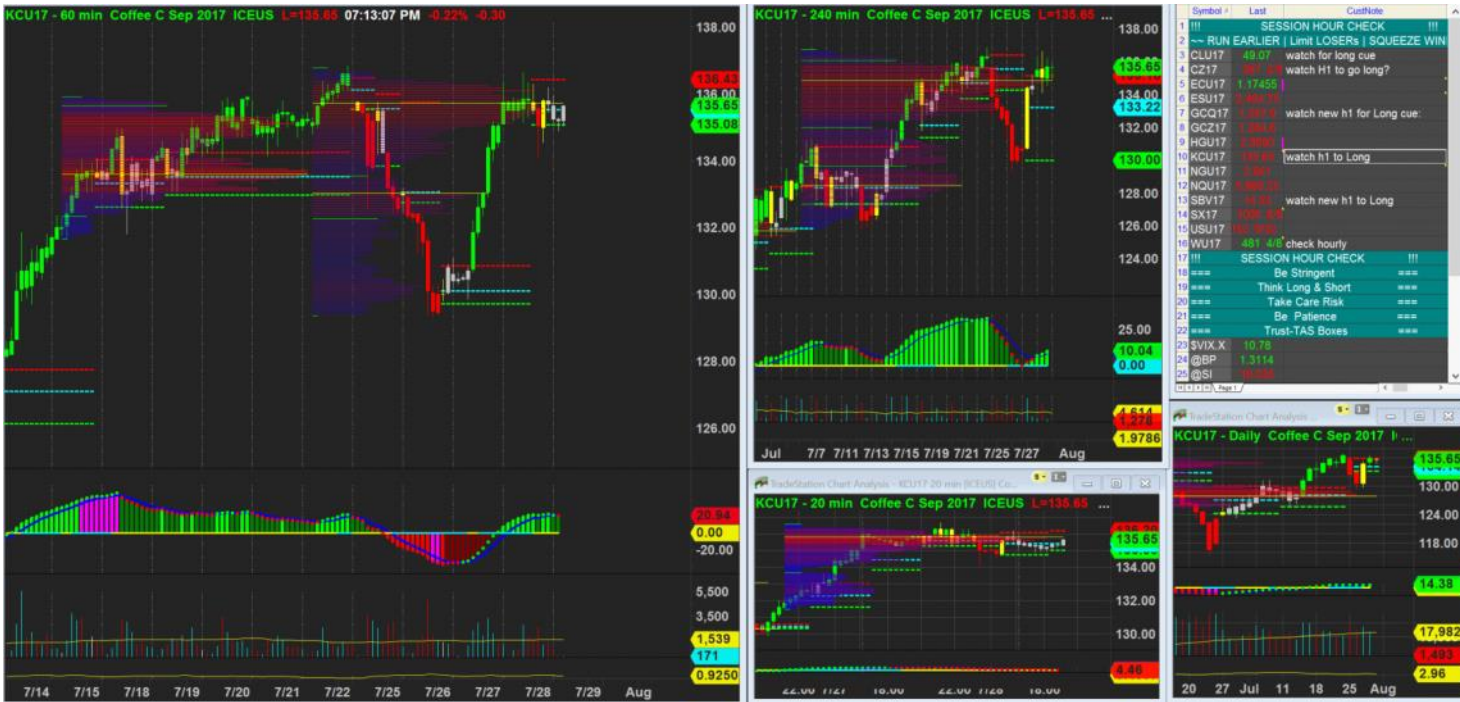
13/7/2017 20:18 - Screen Clipping

Oh too bad...



14/7/2017 17:32 - Screen Clipping

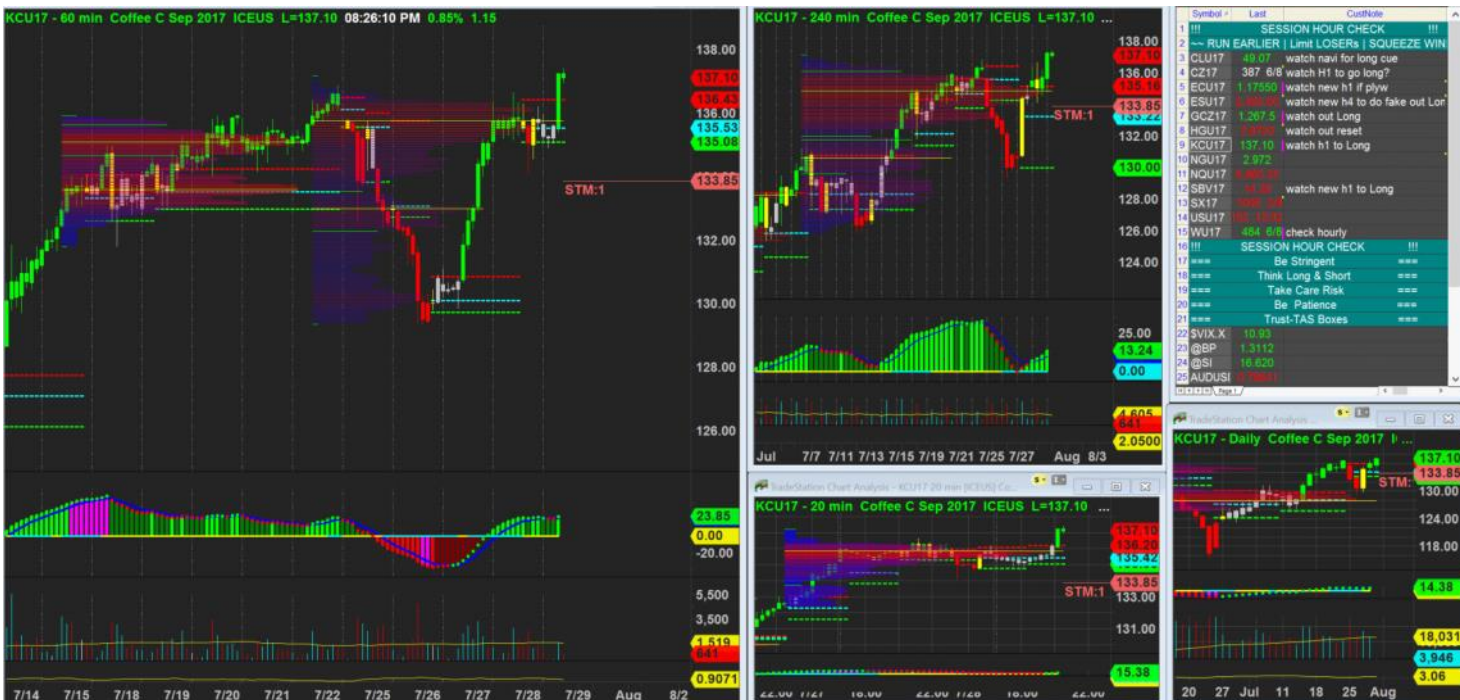
Today continue higher, looks like there is no more chance.



28/7/2017 19:14 - Screen Clipping

Score	Trend	Location	H1 Navi	H1 Navi	H4 Navi	plywood	inside-box	Vol Gap	H1 headwinds	H4 headwinds	H1 Defens e	H4 Defens e	Potent ial RR	Coffee
69.23 %	+ H4 + H1	+ H4 + H1	Refreshed	-20	-10	- H4 + H1	- H4 - H1	+ H4 + H1	1	1	5	2	2	\$678.13

Watch new h1 navi to see if it will make this more favourable score



28/7/2017 20:26 - Screen Clipping

Get into this long after a big break above, so I didn't hv the patient to wait for better entry, which I aware the bigger initial risk. But the score still at borderline so I go ahead.

Score	Trend	Location	H1 Navi	H1 Navi	H4 Navi	plywood	inside-box	Vol Gap	H1 headwinds	H4 headwinds	H1 Defens e	H4 Defens e	Potent ial RR	Coffee
69.23 %	+ H4 + H1	+ H4 + H1	Refreshed	-20	-10	- H4 + H1	- H4 - H1	+ H4 + H1	0	0	5	2	1	\$1,275.00



28/7/2017 23:14 - Screen Clipping

Tightening up a bit after h1 show exhaustion warning, but h4 navi still looks good.



29/7/2017 01:30 - Screen Clipping

Tightening up after more exhaustion and new h1