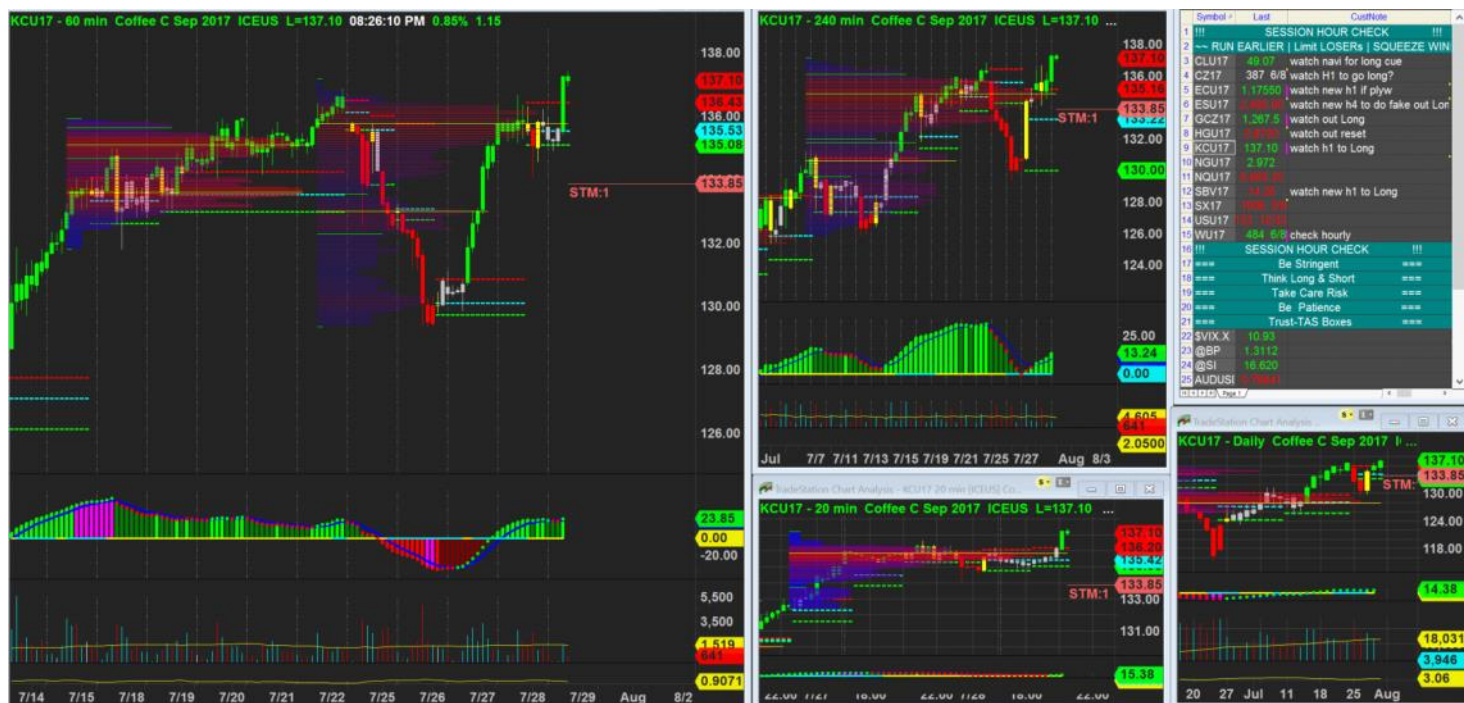


28/7/2017 19:14 - Screen Clipping

Score	Trend	Location	H1 Navi	H1 Navi	H4 Navi	plywood	inside-box	Vol Gap	H1 headw inds	H4 headw inds	H1 Defens e	H4 Defens e	Potent ial RR	Coffee
69.23 %	+ H4 + H1	+ H4 + H1	Refreshed	-20	-10	- H4 + H1	- H4 - H1	+ H4 + H1	1	1	5	2	2	\$678.13

Watch new h1 navi to see if it will make this more favourable score



28/7/2017 20:26 - Screen Clipping

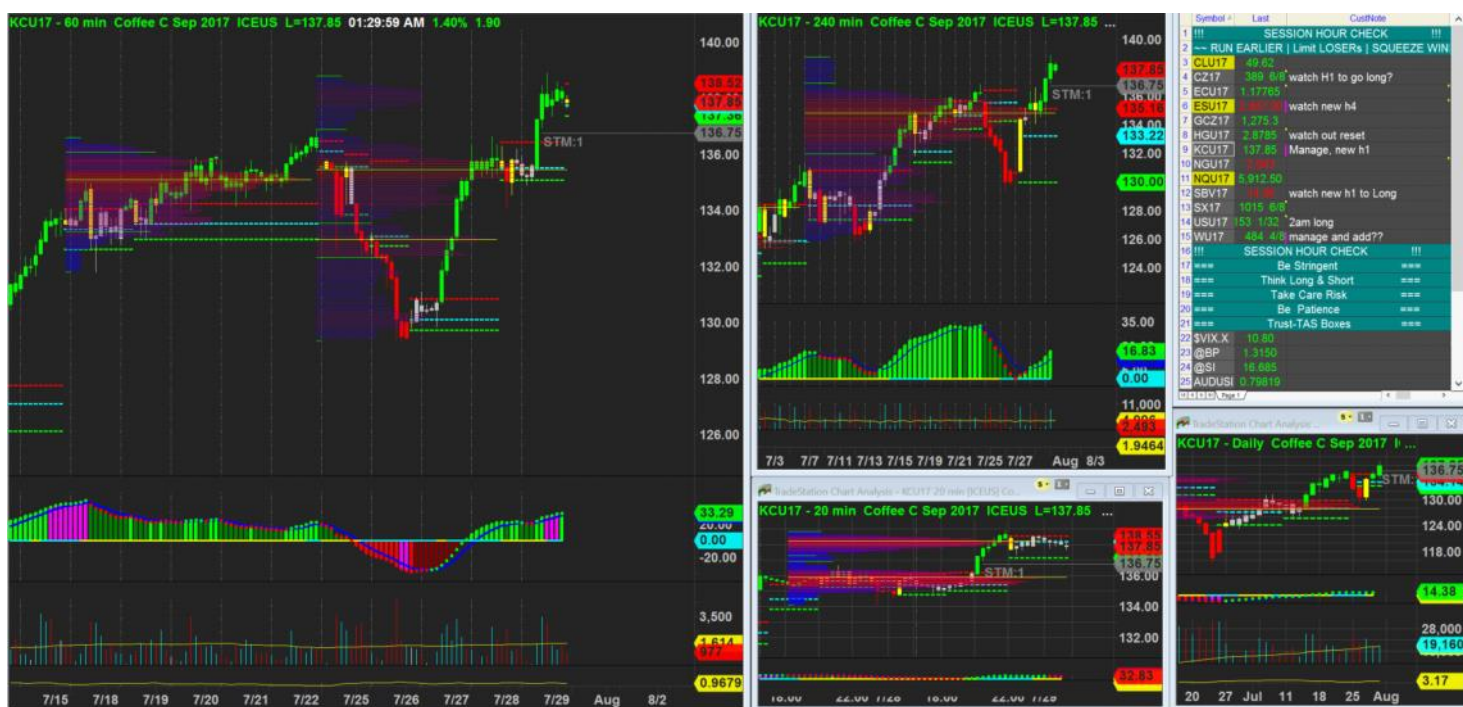
Get into this long after a big break above, so I didn't hv the patient to wait for better entry, which I aware the bigger initial risk. But the score still at borderline so I go ahead.

Score	Trend	Location	H1 Navi	H1 Navi	H4 Navi	plywood	inside-box	Vol Gap	H1 headw inds	H4 headw inds	H1 Defens e	H4 Defens e	Potent ial RR	Coffee
69.23 %	+ H4 + H1	+ H4 + H1	Refreshed	-20	-10	- H4 + H1	- H4 - H1	+ H4 + H1	0	0	5	2	1	\$1,275.00



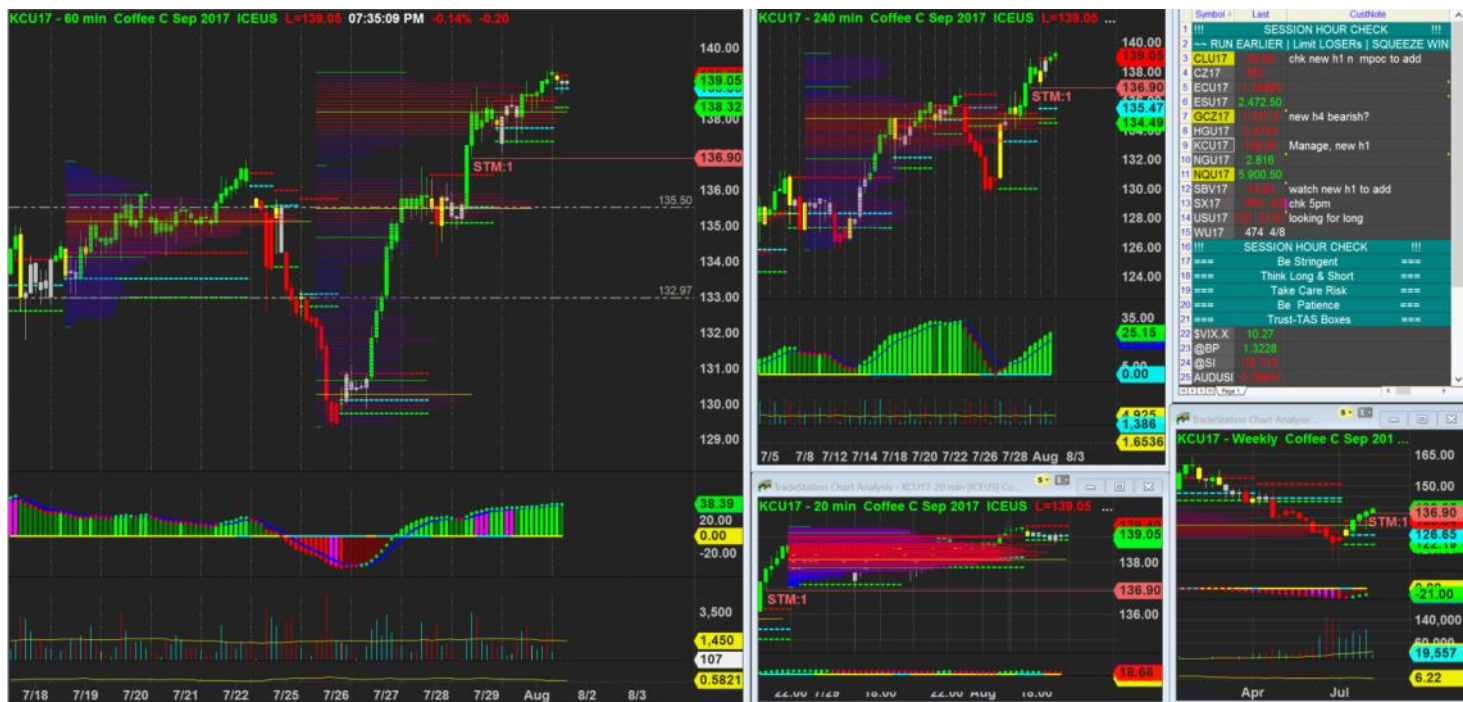
28/7/2017 23:14 - Screen Clipping

Tightening up a bit after h1 show exhaustion warning, but h4 navi still looks good.



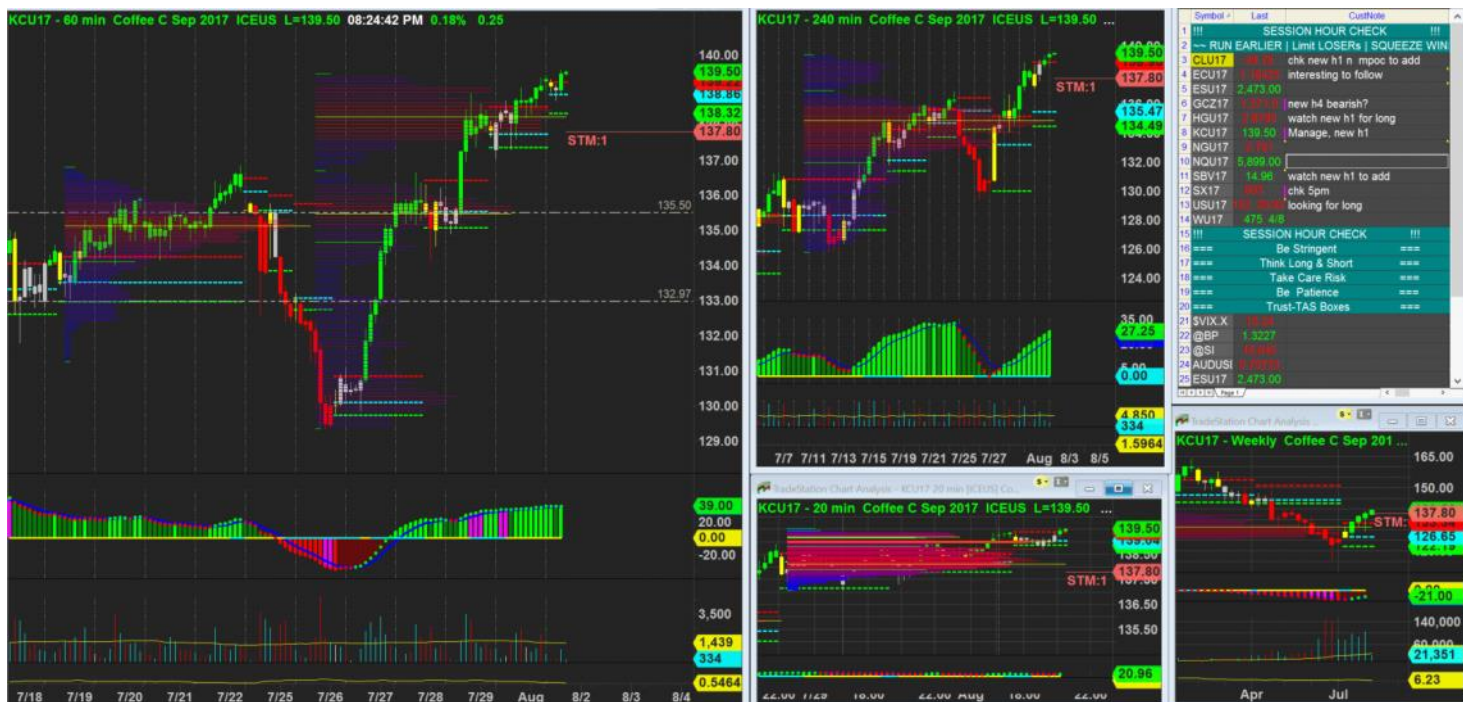
29/7/2017 01:30 - Screen Clipping

Tightening up after more exhaustion and new h1



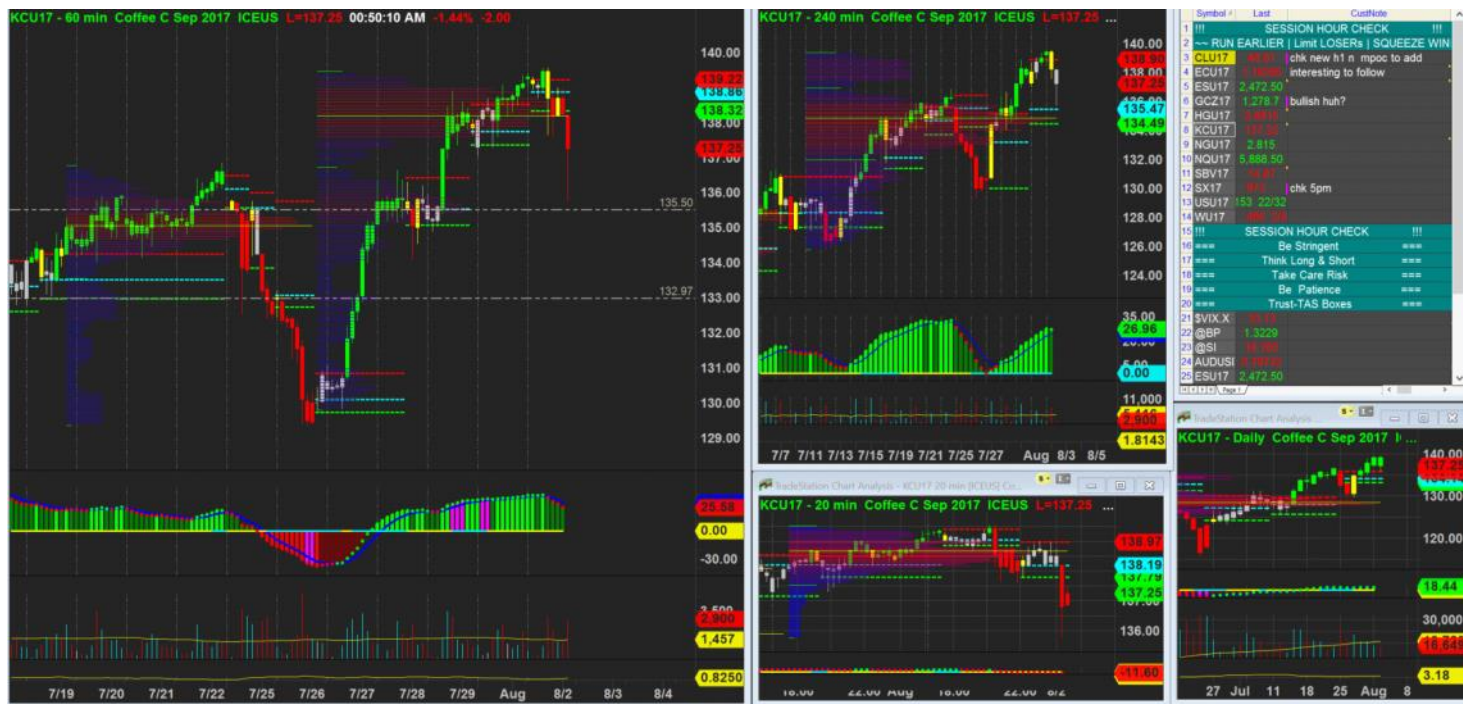
1/8/2017 19:36 - Screen Clipping

Watching to tighten further if break above new h1



1/8/2017 20:24 - Screen Clipping

Tightening again after new h1 breakout, but still staying bit wide from the last bit of vol for now.



2/8/2017 00:50 - Screen Clipping

Good that I ran away earlier